

Datasheet for ABIN3031828
anti-MAPK11 antibody (AA 133-161)[Go to Product page](#)

3 Images

Overview

Quantity:	0.4 mL
Target:	MAPK11
Binding Specificity:	AA 133-161
Reactivity:	Human, Mouse
Host:	Rabbit
Clonality:	Polyclonal
Conjugate:	This MAPK11 antibody is un-conjugated
Application:	Western Blotting (WB), ELISA

Product Details

Immunogen:	A portion of amino acids 133-161 from the human protein was used as the immunogen for this MAPK11 antibody.
Isotype:	Ig Fraction
Purification:	Antigen affinity purified

Target Details

Target:	MAPK11
Alternative Name:	MAPK11 (MAPK11 Products)
Background:	P38 beta is a member of the MAP kinase subfamily of Ser/Thr protein kinases. MAP kinases act as an integration point for multiple biochemical signals, and are involved in a wide variety of cellular processes such as proliferation, differentiation, transcription regulation and

Target Details

development. This kinase is closely related to p38 MAP kinase, both of which can be activated by changes in osmolarity of the extracellular environment, proinflammatory cytokines and cellular stress. This protein preferentially phosphorylates transcription factor ATF2. It is activated by phosphorylation on threonine and tyrosine by MKK6, and inhibited by pyridinyl-imidazole related compounds. Highest levels of expression are found in the brain and heart, with additional expression in the placenta, lung, liver, skeletal muscle, kidney and pancreas.

UniProt: [Q15759](#)

Pathways: [MAPK Signaling](#), [Neurotrophin Signaling Pathway](#), [Activation of Innate immune Response](#), [Response to Water Deprivation](#), [Regulation of Muscle Cell Differentiation](#), [ER-Nucleus Signaling](#), [Hepatitis C](#), [Toll-Like Receptors Cascades](#), [Signaling Events mediated by VEGFR1 and VEGFR2](#), [Thromboxane A2 Receptor Signaling](#), [BCR Signaling](#), [S100 Proteins](#)

Application Details

Application Notes: Titration of the MAPK11 antibody may be required due to differences in protocols and secondary/substrate sensitivity.\. Western blot: 1:1000

Restrictions: For Research Use only

Handling

Format: Liquid

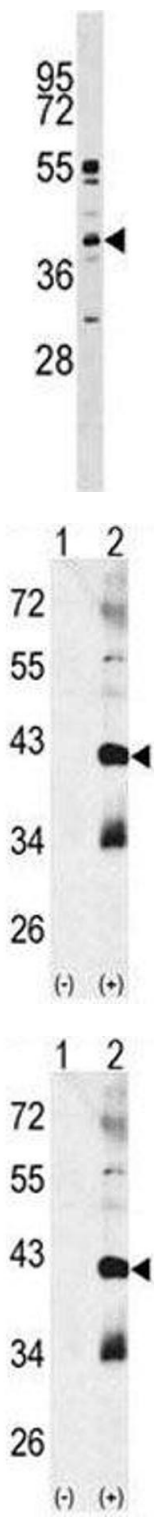
Buffer: In 1X PBS pH 7.4 with 0.09 % sodium azide

Preservative: Sodium azide

Precaution of Use: This product contains Sodium azide: a POISONOUS AND HAZARDOUS SUBSTANCE which should be handled by trained staff only.

Storage: -20 °C

Storage Comment: Aliquot the MAPK11 antibody and store frozen at -20°C or colder. Avoid repeated freeze-thaw cycles.



Western Blotting

Image 1. MAPK11 antibody western blot analysis in K562 lysate

Western Blotting

Image 2. Western blot analysis of MAPK11 antibody and 293 cell lysate (2 ug/lane) either nontransfected (Lane 1) or transiently transfected with the MAPK11 gene (2).

Western Blotting

Image 3. Western blot analysis of MAPK11 antibody and 293 cell lysate (2 ug/lane) either nontransfected (Lane 1) or transiently transfected with the MAPK11 gene (2).