

Datasheet for ABIN3031847
anti-MAP3K12 antibody

3 Images

[Go to Product page](#)

Overview

Quantity:	0.4 mL
Target:	MAP3K12
Reactivity:	Human
Host:	Rabbit
Clonality:	Polyclonal
Conjugate:	This MAP3K12 antibody is un-conjugated
Application:	ELISA, Western Blotting (WB), Immunohistochemistry (IHC)

Product Details

Immunogen:	This DLK antibody was produced from rabbits immunized with a recombinant protein of human DLK.
Isotype:	Ig Fraction
Purification:	Antigen affinity purified

Target Details

Target:	MAP3K12
Alternative Name:	DLK (MAP3K12 Products)
Background:	<p>This gene encodes a transmembrane protein containing six epidermal growth factor repeats. The protein is involved in the differentiation of several cell types, including adipocytes, it is also thought to be a tumor suppressor. It is one of several imprinted genes located in a region of on chr 14q32. Certain mutations in this imprinted region can cause phenotypes similar to maternal</p>

Target Details

and paternal uniparental disomy of chromosome 14 (UPD14). This gene is expressed from the paternal allele. A polymorphism within this gene has been associated with child and adolescent obesity. The mode of inheritance for this polymorphism is polar overdominance, this non-Mendelian inheritance pattern was first described in sheep with the callipyge phenotype, which is characterized by muscle hypertrophy and decreased fat mass.

UniProt: [P80370](#)

Pathways: [MAPK Signaling](#)

Application Details

Application Notes: Titration of the DLK antibody may be required due to differences in protocols and secondary/substrate sensitivity.\. Western blot: 1:1000,IHC (Paraffin): 1:50-1:100

Restrictions: For Research Use only

Handling

Format: Liquid

Buffer: In 1X PBS, pH 7.4, with 0.09 % sodium azide

Preservative: Sodium azide

Precaution of Use: This product contains Sodium azide: a POISONOUS AND HAZARDOUS SUBSTANCE which should be handled by trained staff only.

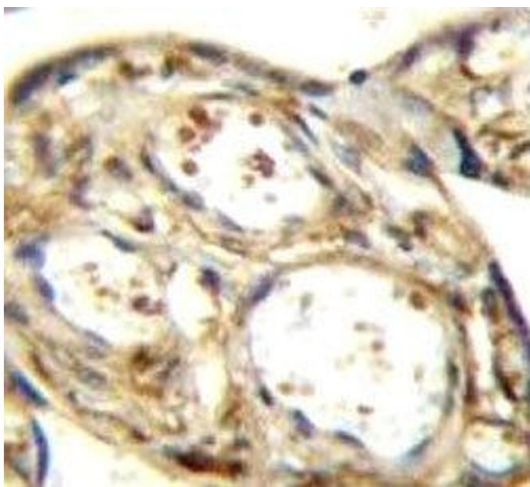
Storage: -20 °C

Storage Comment: Aliquot the DLK antibody and store frozen at -20°C or colder. Avoid repeated freeze-thaw cycles.



Western Blotting

Image 1. DLK antibody western blot analysis in CEM lysate. Observed molecular weight 41~60 kDa depending on glycosylation level.



Immunohistochemistry

Image 2. DLK antibody immunohistochemistry analysis in formalin fixed and paraffin embedded human placenta tissue.



Western Blotting

Image 3. DLK antibody western blot analysis in CEM lysate. Observed molecular weight 41~60 kDa depending on glycosylation level.