



[Go to Product page](#)

Datasheet for ABIN3031869
anti-MUC20 antibody (AA 654-684)

6 Images

Overview

Quantity:	0.4 mL
Target:	MUC20
Binding Specificity:	AA 654-684
Reactivity:	Human
Host:	Rabbit
Clonality:	Polyclonal
Conjugate:	This MUC20 antibody is un-conjugated
Application:	Western Blotting (WB), ELISA, Immunohistochemistry (IHC), Immunofluorescence (IF), Flow Cytometry (FACS)

Product Details

Immunogen:	A portion of amino acids 654-684 from the human protein was used as the immunogen for this MUC20 antibody.
Isotype:	Ig Fraction
Purification:	Antigen affinity purified

Target Details

Target:	MUC20
Alternative Name:	MUC20 (MUC20 Products)
Background:	This gene encodes a member of the mucin protein family. Mucins are high molecular weight glycoproteins secreted by many epithelial tissues to form an insoluble mucous barrier. The

Target Details

shorter isoform expressed by this gene is localized to the plasma membrane, whereas the longer isoform might be secreted. The C terminus of this protein associates with the multifunctional docking site of the met proto-oncogene and suppresses activation of some downstream met signaling cascades. The protein features a tandem repeat domain that varies between 2 and 6 copies in different individuals. Multiple transcript variants encoding different isoforms have been found for this gene.

UniProt: [Q8N307](#)

Application Details

Application Notes: Titration of the MUC20 antibody may be required due to differences in protocols and secondary/substrate sensitivity.\. Western blot: 1:1000,IHC (Paraffin): 1:10-1:50,Immunofluorescence: 1:10-1:50,Flow Cytometry: 1:10-1:50

Restrictions: For Research Use only

Handling

Format: Liquid

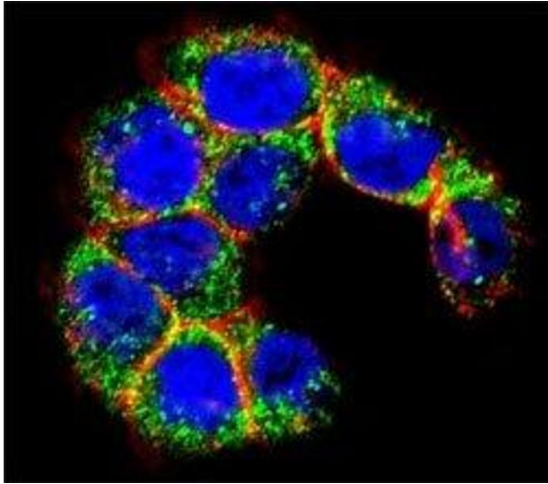
Buffer: In 1X PBS pH 7.4 with 0.09 % sodium azide

Preservative: Sodium azide

Precaution of Use: This product contains Sodium azide: a POISONOUS AND HAZARDOUS SUBSTANCE which should be handled by trained staff only.

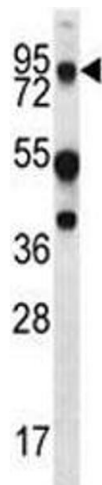
Storage: -20 °C

Storage Comment: Aliquot the MUC20 antibody and store frozen at -20°C or colder. Avoid repeated freeze-thaw cycles.



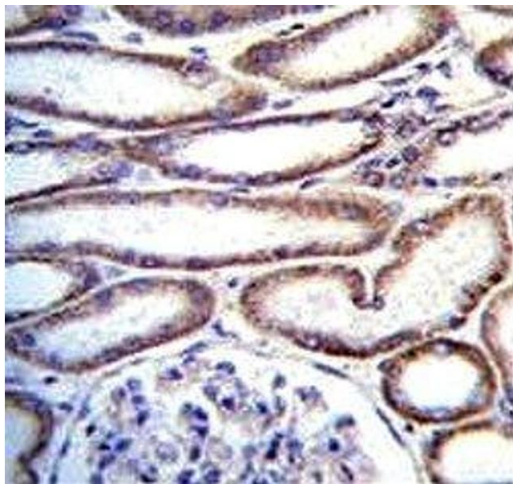
Immunofluorescence

Image 1. Confocal immunofluorescent analysis of MUC20 antibody with WiDr cells followed by Alexa Fluor 488-conjugated goat anti-rabbit IgG (green). Actin filaments have been labeled with Alexa Fluor 555 Phalloidin (red). DAPI was used as a nuclear counterstain (bl



Western Blotting

Image 2. MUC20 antibody western blot analysis in WiDr lysate.



Immunohistochemistry

Image 3. MUC20 antibody immunohistochemistry analysis in formalin fixed and paraffin embedded human kidney tissue.

Please check the [product details page](#) for more images. Overall 6 images are available for ABIN3031869.