

Datasheet for ABIN3031879

anti-MUSK antibody

5 Images

[Go to Product page](#)

Overview

Quantity:	0.4 mL
Target:	MUSK
Reactivity:	Human, Mouse
Host:	Rabbit
Clonality:	Polyclonal
Conjugate:	This MUSK antibody is un-conjugated
Application:	Western Blotting (WB), ELISA, Flow Cytometry (FACS), Immunofluorescence (IF)

Product Details

Immunogen:	This MUSK antibody was produced from rabbits immunized with human MUSK recombinant protein.
Isotype:	Ig Fraction
Purification:	Purified

Target Details

Target:	MUSK
Alternative Name:	MUSK (MUSK Products)
Background:	MuSK activates signaling cascades responsible for many aspects of synapse formation, including the organization of the postsynaptic membrane, synapse-specific transcription, and presynaptic differentiation. MuSK also mediates agrin-induced aggregation of acetylcholine receptors at the mature vertebrate neuromuscular junction and also during synapse formation.

Target Details

It has been shown that a majority of AChR Ab-seronegative myasthenia gravis patients possess serum autoantibodies against MuSK.

UniProt: [O15146](#)

Pathways: [RTK Signaling](#), [Regulation of Muscle Cell Differentiation](#), [Synaptic Membrane](#), [Regulation of Cell Size](#), [Skeletal Muscle Fiber Development](#)

Application Details

Application Notes: Titration of the MUSK antibody may be required due to differences in protocols and secondary/substrate sensitivity.\. Western blot: 1:1000,Flow Cytometry: 1:10-1:50,Immunofluorescence: 1:10-1:50

Restrictions: For Research Use only

Handling

Format: Liquid

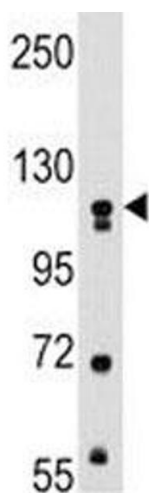
Buffer: In 1X PBS pH 7.4 with 0.09 % sodium azide

Preservative: Sodium azide

Precaution of Use: This product contains Sodium azide: a POISONOUS AND HAZARDOUS SUBSTANCE which should be handled by trained staff only.

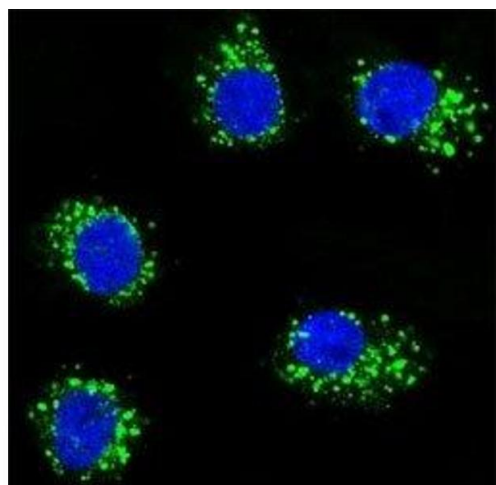
Storage: -20 °C

Storage Comment: Aliquot the MUSK antibody and store frozen at -20°C or colder. Avoid repeated freeze-thaw cycles.



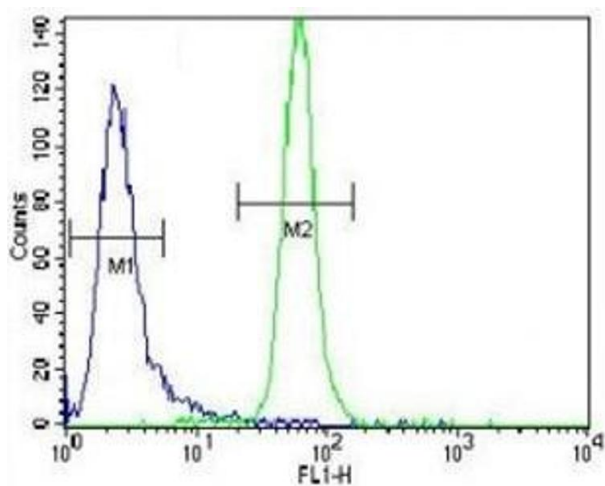
Western Blotting

Image 1. Western blot analysis of MUSK antibody and mouse kidney tissue lysate.



Immunofluorescence

Image 2. Confocal immunofluorescent analysis of MUSK antibody with MDA-MB231 cells followed by Alexa Fluor 488-conjugated goat anti-rabbit IgG (green). DAPI was used as a nuclear counterstain (blue).



Flow Cytometry

Image 3. MUSK antibody flow cytometric analysis of CEM cells (right histogram) compared to a negative control cell (left histogram). FITC-conjugated goat-anti-rabbit secondary Ab was used for the analysis.

Please check the [product details page](#) for more images. Overall 5 images are available for ABIN3031879.