

Datasheet for ABIN3031882
anti-MLH1 antibody (AA 452-480)[Go to Product page](#)

3 Images

Overview

Quantity:	0.4 mL
Target:	MLH1
Binding Specificity:	AA 452-480
Reactivity:	Human
Host:	Rabbit
Clonality:	Polyclonal
Conjugate:	This MLH1 antibody is un-conjugated
Application:	Western Blotting (WB), ELISA, Flow Cytometry (FACS)

Product Details

Immunogen:	A portion of amino acids 452-480 from the human protein was used as the immunogen for this MLH1 antibody.
Isotype:	Ig Fraction
Purification:	Antigen affinity purified

Target Details

Target:	MLH1
Alternative Name:	MLH1 (MLH1 Products)
Background:	This gene was identified as a locus frequently mutated in hereditary nonpolyposis colon cancer (HNPCC). It is a human homolog of the E. coli DNA mismatch repair gene mutL, consistent with the characteristic alterations in microsatellite sequences (RER+phenotype) found in HNPCC.

Target Details

Alternative splicing results in multiple transcript variants encoding distinct isoforms. Additional transcript variants have been described, but their full-length natures have not been determined.

UniProt: [P40692](#)

Pathways: [DNA Damage Repair](#), [Production of Molecular Mediator of Immune Response](#)

Application Details

Application Notes: Titration of the MLH1 antibody may be required due to differences in protocols and secondary/substrate sensitivity.\. Western blot: 1:1000,Flow Cytometry: 1:10-1:50

Restrictions: For Research Use only

Handling

Format: Liquid

Buffer: In 1X PBS, pH 7.4, with 0.09 % sodium azide

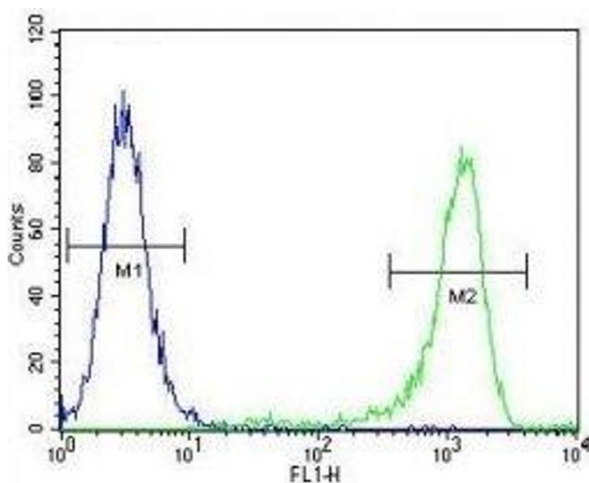
Preservative: Sodium azide

Precaution of Use: This product contains Sodium azide: a POISONOUS AND HAZARDOUS SUBSTANCE which should be handled by trained staff only.

Storage: -20 °C

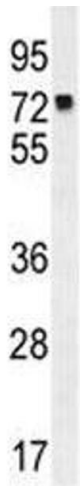
Storage Comment: Aliquot the MLH1 antibody and store frozen at -20°C or colder. Avoid repeated freeze-thaw cycles.

Images



Flow Cytometry

Image 1. MLH1 antibody flow cytometric analysis of K562 cells (green) compared to a negative control (blue). FITC-conjugated goat-anti-rabbit secondary Ab was used for the analysis.



Western Blotting

Image 2. MLH1 antibody western blot analysis in K562 lysate. Predicted molecular weight: 85/58/74 kDa (isoforms 1/2/3).



Western Blotting

Image 3. MLH1 antibody western blot analysis in K562 lysate. Predicted molecular weight: 85/58/74 kDa (isoforms 1/2/3).