



[Go to Product page](#)

Datasheet for ABIN3031883
anti-MSH2 antibody (AA 637-665)

5 Images

Overview

Quantity:	0.4 mL
Target:	MSH2
Binding Specificity:	AA 637-665
Reactivity:	Human
Host:	Rabbit
Clonality:	Polyclonal
Conjugate:	This MSH2 antibody is un-conjugated
Application:	Western Blotting (WB), ELISA, Immunofluorescence (IF), Flow Cytometry (FACS)

Product Details

Immunogen:	A portion of amino acids 637-665 from the human protein was used as the immunogen for this MSH2 antibody.
Isotype:	Ig Fraction
Purification:	Antigen affinity purified

Target Details

Target:	MSH2
Alternative Name:	MSH2 (MSH2 Products)
Background:	MSH2 was identified as a locus frequently mutated in hereditary nonpolyposis colon cancer (HNPCC). When cloned, it was discovered to be a human homolog of the E. coli mismatch repair gene mutS, consistent with the characteristic alterations in microsatellite sequences

Target Details

(RER+ phenotype) found in HNPCC. [provided by RefSeq].

UniProt: [P43246](#)

Pathways: [DNA Damage Repair](#), [Production of Molecular Mediator of Immune Response](#)

Application Details

Application Notes: Titration of the MSH2 antibody may be required due to differences in protocols and secondary/substrate sensitivity. Western blot: 1:1000, Immunofluorescence: 1:10-1:50, Flow Cytometry: 1:10-1:50

Restrictions: For Research Use only

Handling

Format: Liquid

Buffer: In 1X PBS, pH 7.4, with 0.09 % sodium azide

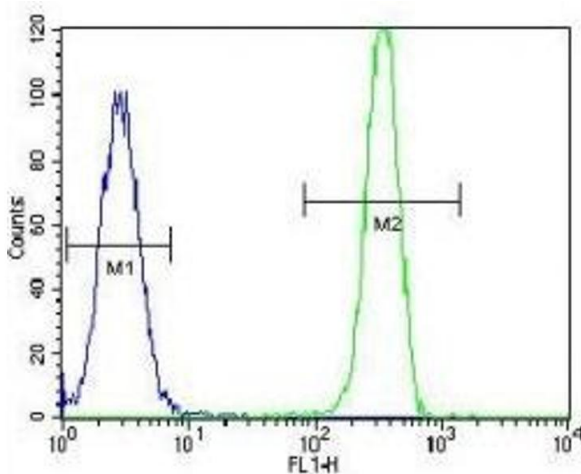
Preservative: Sodium azide

Precaution of Use: This product contains Sodium azide: a POISONOUS AND HAZARDOUS SUBSTANCE which should be handled by trained staff only.

Storage: -20 °C

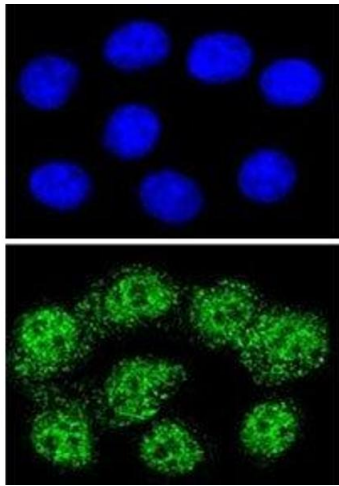
Storage Comment: Aliquot the MSH2 antibody and store frozen at -20°C or colder. Avoid repeated freeze-thaw cycles.

Images



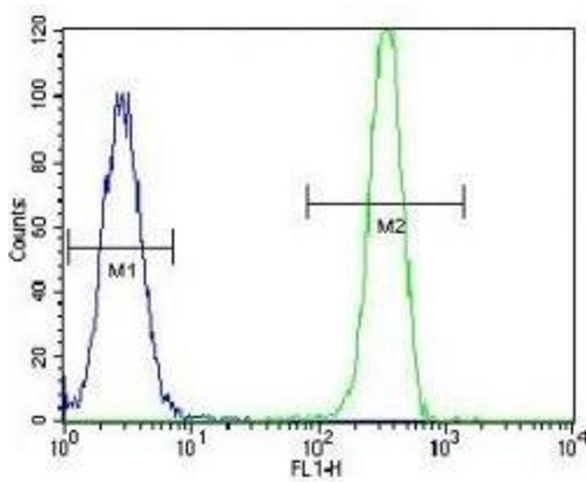
Flow Cytometry

Image 1. MSH2 antibody flow cytometric analysis of HeLa cells (green) compared to a [negative control](#) (blue). FITC-conjugated goat-anti-rabbit secondary Ab was used for the analysis.



Immunofluorescence

Image 2. Confocal immunofluorescent analysis of MSH2 antibody with HeLa cells followed by Alexa Fluor 488-conjugated goat anti-rabbit IgG (green). DAPI was used as a nuclear counterstain (blue).



Flow Cytometry

Image 3. MSH2 antibody flow cytometric analysis of HeLa cells (green) compared to a negative control (blue). FITC-conjugated goat-anti-rabbit secondary Ab was used for the analysis.

Please check the [product details page](#) for more images. Overall 5 images are available for ABIN3031883.