

Datasheet for ABIN3031895  
**anti-MLL2 antibody (AA 4980-5009)**[Go to Product page](#)

## 2 Images

## Overview

Quantity:	0.4 mL
Target:	MLL2
Binding Specificity:	AA 4980-5009
Reactivity:	Human
Host:	Rabbit
Clonality:	Polyclonal
Conjugate:	This MLL2 antibody is un-conjugated
Application:	ELISA, Western Blotting (WB)

## Product Details

Immunogen:	A portion of amino acids 4980-5009 from the human protein was used as the immunogen for this MLL2 antibody.
Isotype:	Ig Fraction
Purification:	Purified

## Target Details

Target:	MLL2
Alternative Name:	MLL2 ( <a href="#">MLL2 Products</a> )
Background:	The SET domain is a conserved C-terminal domain that characterizes proteins of the MLL family, including MLL2. The MLL SET domain is a histone H3 Lys4 (K4)-specific methyltransferase whose activity is stimulated with acetylated H3 peptides. The gene for MLL2

## Target Details

encodes a 5,262-amino acid protein containing a SET domain, 5 PHD fingers, potential zinc fingers, and a long run of glutamines interrupted by hydrophobic residues (mostly leucine). They also detected an alternatively spliced form encoding 4,957 amino acids and lacking an N-terminal zinc finger and PHD finger. By analysis of rodent/human hybrid cells and analysis of the Genebridge radiation hybrid panel, they mapped the gene to the 12p13.1-qter region. The 12q12-q13 region is involved in duplications and translocations associated with cancer. By database searching, Karlin et al. (2002) identified 192 human protein sequences that have multiple amino acid runs, many of which are associated with disease, including cancer. Karlin et al. (2002) found that a key aspect of 82 of these protein sequences is their role in transcription, translation, and developmental regulation. MLL2 is a striking example of proteins with multiple amino acid runs, with 22 glutamine runs. Genes encoding a significant number of long amino acid runs are potentially associated with diseases, such as cancer.

UniProt: [O14686](#)

Pathways: [Intracellular Steroid Hormone Receptor Signaling Pathway](#), [Regulation of Intracellular Steroid Hormone Receptor Signaling](#), [Warburg Effect](#)

## Application Details

Application Notes: Titration of the MLL2 antibody may be required due to differences in protocols and secondary/substrate sensitivity. Western blot: 1:500-1:1000

Restrictions: For Research Use only

## Handling

Format: Liquid

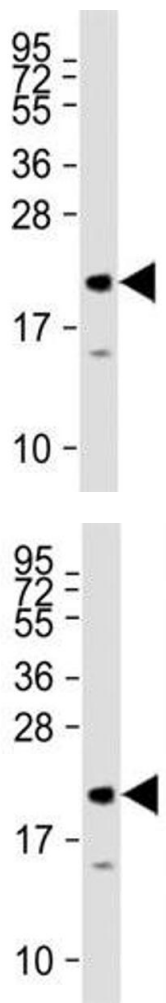
Buffer: In 1X PBS, pH 7.4, with 0.09 % sodium azide

Preservative: Sodium azide

Precaution of Use: This product contains Sodium azide: a POISONOUS AND HAZARDOUS SUBSTANCE which should be handled by trained staff only.

Storage: -20 °C

Storage Comment: Aliquot the MLL2 antibody and store frozen at -20°C or colder. Avoid repeated freeze-thaw cycles.



Western Blotting

**Image 1.** MML2 antibody tested on human recombinant protein at 1:27000.

Western Blotting

**Image 2.** MML2 antibody tested on human recombinant protein at 1:27000.