

Datasheet for ABIN3031896
anti-MLL5/KMT2E antibody (AA 93-120)[Go to Product page](#)

2 Images

Overview

Quantity:	0.4 mL
Target:	MLL5/KMT2E (MLL5)
Binding Specificity:	AA 93-120
Reactivity:	Human
Host:	Rabbit
Clonality:	Polyclonal
Conjugate:	This MLL5/KMT2E antibody is un-conjugated
Application:	Western Blotting (WB), ELISA

Product Details

Immunogen:	A portion of amino acids 93-120 from the human protein was used as the immunogen for this MLL5 antibody.
Isotype:	Ig Fraction
Cross-Reactivity (Details):	Expected species reactivity: Mouse
Purification:	Antigen affinity purified

Target Details

Target:	MLL5/KMT2E (MLL5)
Alternative Name:	MLL5 (MLL5 Products)
Background:	This gene is a member of the myeloid/lymphoid or mixed-lineage leukemia (MLL) family and

Target Details

encodes a protein with an N-terminal PHD zinc finger and a central SET domain.

Overexpression of the protein inhibits cell cycle progression. Alternate transcriptional splice variants have been characterized. [provided by RefSeq].

UniProt:	Q8IZD2
Pathways:	Retinoic Acid Receptor Signaling Pathway , Warburg Effect

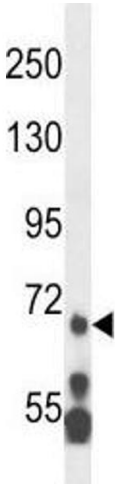
Application Details

Application Notes:	Titration of the MLL5 antibody may be required due to differences in protocols and secondary/substrate sensitivity.\. Western blot: 1:1000
Restrictions:	For Research Use only

Handling

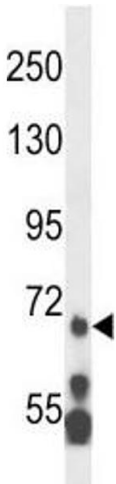
Format:	Liquid
Buffer:	In 1X PBS pH 7.4 with 0.09 % sodium azide
Preservative:	Sodium azide
Precaution of Use:	This product contains Sodium azide: a POISONOUS AND HAZARDOUS SUBSTANCE which should be handled by trained staff only.
Storage:	-20 °C
Storage Comment:	Aliquot the MLL5 antibody and store frozen at -20°C or colder. Avoid repeated freeze-thaw cycles.

Images



Western Blotting

Image 1. MLL5 antibody western blot analysis in HL-60 lysate.



Western Blotting

Image 2. MLL5 antibody western blot analysis in HL-60 lysate.