

Datasheet for ABIN3031900  
**anti-MEF2A antibody (AA 453-479)**[Go to Product page](#)

## 5 Images

## Overview

Quantity:	0.4 mL
Target:	MEF2A
Binding Specificity:	AA 453-479
Reactivity:	Human, Mouse
Host:	Rabbit
Clonality:	Polyclonal
Conjugate:	This MEF2A antibody is un-conjugated
Application:	Western Blotting (WB), Immunohistochemistry (IHC), ELISA, Immunofluorescence (IF)

## Product Details

Immunogen:	A portion of amino acids 453-479 from the human protein was used as the immunogen for this MEF2A antibody.
Isotype:	Ig Fraction
Cross-Reactivity (Details):	Expected species reactivity: Rat, Bovine, Pig
Purification:	Antigen affinity purified

## Target Details

Target:	MEF2A
Alternative Name:	MEF2A ( <a href="#">MEF2A Products</a> )
Background:	MEF2A is a DNA-binding transcription factor that activates many muscle-specific, growth

## Target Details

factor-induced, and stress-induced genes. The encoded protein can act as a homodimer or as a heterodimer and is involved in several cellular processes, including muscle development, neuronal differentiation, cell growth control, and apoptosis. Defects in this protein could be a cause of autosomal dominant coronary artery disease 1 with myocardial infarction (ADCAD1).

UniProt: [Q02078](#)

Pathways: [Neurotrophin Signaling Pathway](#), [Activation of Innate immune Response](#), [Carbohydrate Homeostasis](#), [Chromatin Binding](#), [Regulation of Muscle Cell Differentiation](#), [Toll-Like Receptors Cascades](#)

## Application Details

Application Notes: Titration of the MEF2A antibody may be required due to differences in protocols and secondary/substrate sensitivity.\. Western blot: 1:1000,IHC (Paraffin): 1:50-1:100,Immunofluorescence: 1:10-1:50

Restrictions: For Research Use only

## Handling

Format: Liquid

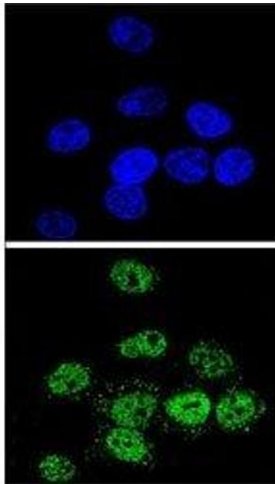
Buffer: In 1X PBS, pH 7.4, with 0.09 % sodium azide

Preservative: Sodium azide

Precaution of Use: This product contains Sodium azide: a POISONOUS AND HAZARDOUS SUBSTANCE which should be handled by trained staff only.

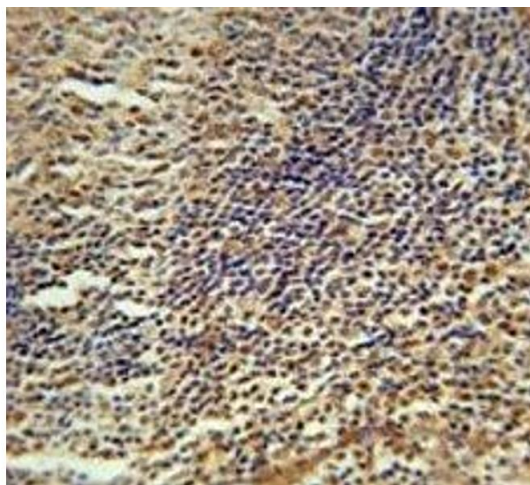
Storage: -20 °C

Storage Comment: Aliquot the MEF2A antibody and store frozen at -20°C or colder. Avoid repeated freeze-thaw cycles.



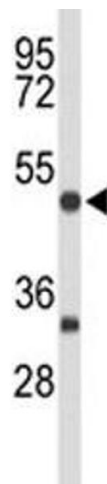
#### Immunofluorescence

**Image 1.** Confocal immunofluorescent analysis of MEF2A antibody with HeLa cells followed by Alexa Fluor 488-conjugated goat anti-rabbit IgG (green). DAPI was used as a nuclear counterstain (blue).



#### Immunohistochemistry

**Image 2.** MEF2A antibody immunohistochemistry analysis in formalin fixed and paraffin embedded human tonsil tissue.



#### Western Blotting

**Image 3.** Western blot analysis of MEF2A antibody and mouse brain tissue lysate

Please check the [product details page](#) for more images. Overall 5 images are available for ABIN3031900.