

Datasheet for ABIN3031902
anti-MEF2C antibody (AA 365-394)

5 Images

[Go to Product page](#)

Overview

Quantity:	0.4 mL
Target:	MEF2C
Binding Specificity:	AA 365-394
Reactivity:	Human
Host:	Rabbit
Clonality:	Polyclonal
Conjugate:	This MEF2C antibody is un-conjugated
Application:	Western Blotting (WB), ELISA, Immunohistochemistry (IHC), Immunofluorescence (IF)

Product Details

Immunogen:	A portion of amino acids 365-394 from the human protein was used as the immunogen for this MEF2C antibody.
Isotype:	Ig Fraction
Cross-Reactivity (Details):	Expected species reactivity: Pig
Purification:	Antigen affinity purified

Target Details

Target:	MEF2C
Alternative Name:	MEF2C (MEF2C Products)
Background:	MEF2C is a transcription activator which binds specifically to the MEF2 element present in the

Target Details

regulatory regions of many muscle-specific genes. This protein controls cardiac morphogenesis and myogenesis, and is also involved in vascular development. It may also be involved in neurogenesis and in the development of cortical architecture.

UniProt: [Q06413](#)

Pathways: [Neurotrophin Signaling Pathway](#), [Activation of Innate immune Response](#), [Cellular Response to Molecule of Bacterial Origin](#), [Carbohydrate Homeostasis](#), [Chromatin Binding](#), [Regulation of Muscle Cell Differentiation](#), [Skeletal Muscle Fiber Development](#), [Toll-Like Receptors Cascades](#), [BCR Signaling](#)

Application Details

Application Notes: Titration of the MEF2C antibody may be required due to differences in protocols and secondary/substrate sensitivity.\. Western blot: 1:1000,Immunofluorescence: 1:10-1:50,IHC (Paraffin): 1:10-1:50

Restrictions: For Research Use only

Handling

Format: Liquid

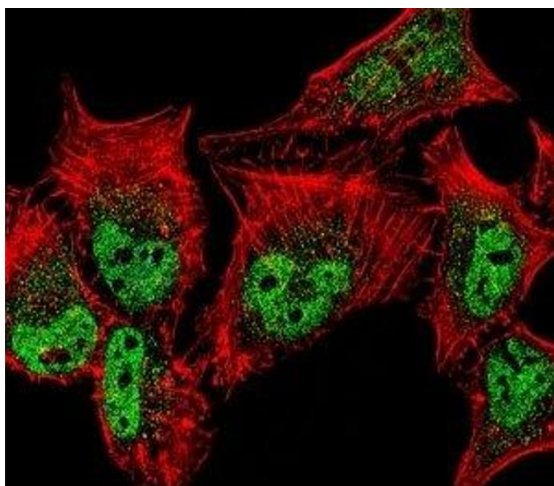
Buffer: In 1X PBS, pH 7.4, with 0.09 % sodium azide

Preservative: Sodium azide

Precaution of Use: This product contains Sodium azide: a POISONOUS AND HAZARDOUS SUBSTANCE which should be handled by trained staff only.

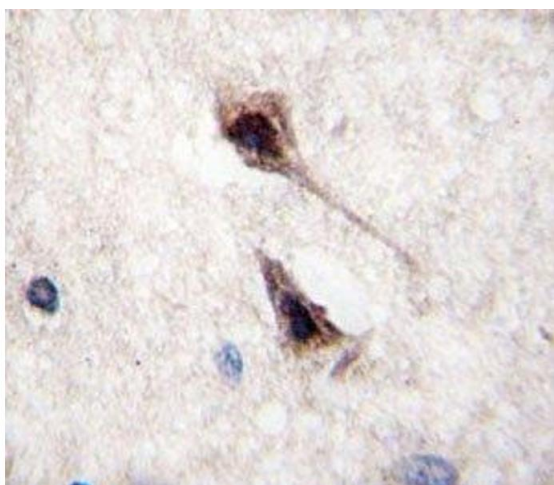
Storage: -20 °C

Storage Comment: Aliquot the MEF2C antibody and store frozen at -20°C or colder. Avoid repeated freeze-thaw cycles.



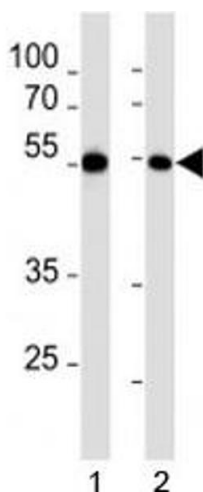
Immunofluorescence

Image 1. Fluorescent confocal image of HeLa cell stained with MEF2C antibody. MEF2C immunoreactivity is localized to vesicles and nucleus significantly.



Immunohistochemistry

Image 2. IHC analysis of FFPE human brain tissue stained with MEF2C antibody



Western Blotting

Image 3. MEF2C antibody western blot analysis in 1) HL-60 and 2) K562 lysate.

Please check the [product details page](#) for more images. Overall 5 images are available for ABIN3031902.