

Datasheet for ABIN3031910  
**anti-MEF2D antibody (AA 108-136)**



[Go to Product page](#)

2 Images

## Overview

Quantity:	0.4 mL
Target:	MEF2D
Binding Specificity:	AA 108-136
Reactivity:	Human
Host:	Rabbit
Clonality:	Polyclonal
Conjugate:	This MEF2D antibody is un-conjugated
Application:	Western Blotting (WB), ELISA

## Product Details

Immunogen:	A portion of amino acids 108-136 from the human protein was used as the immunogen for this MEF2D antibody.
Isotype:	Ig Fraction
Purification:	Antigen affinity purified

## Target Details

Target:	MEF2D
Alternative Name:	MEF2D ( <a href="#">MEF2D Products</a> )
Background:	Transcriptional activator which binds specifically to the MEF2 element, 5'-YTA[AT](4)TAR-3', found in numerous muscle-specific, growth factor-and stress-induced genes. Mediates cellular functions not only in skeletal and cardiac muscle development, but also in neuronal

## Target Details

differentiation and survival. Plays diverse roles in the control of cell growth, survival and apoptosis via p38 MAPK signaling in muscle-specific and/or growth factor-related transcription. Plays a critical role in the regulation of neuronal apoptosis (By similarity).

UniProt: [Q14814](#)

## Application Details

Application Notes: Titration of the MEF2D antibody may be required due to differences in protocols and secondary/substrate sensitivity.\. Western blot: 1:1000

Restrictions: For Research Use only

## Handling

Format: Liquid

Buffer: In 1X PBS, pH 7.4, with 0.09 % sodium azide

Preservative: Sodium azide

Precaution of Use: This product contains Sodium azide: a POISONOUS AND HAZARDOUS SUBSTANCE which should be handled by trained staff only.

Storage: -20 °C

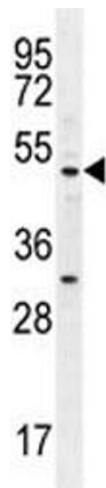
Storage Comment: Aliquot the MEF2D antibody and store frozen at -20°C or colder. Avoid repeated freeze-thaw cycles.

## Images



### Western Blotting

**Image 1.** MEF2D antibody western blot analysis in ZR-75-1 lysate.



### Western Blotting

**Image 2.** MEF2D antibody western blot analysis in ZR-75-1 lysate.