

Datasheet for ABIN3031917

anti-Myosin Binding Subunit antibody (N-Term)**3** Images[Go to Product page](#)

Overview

Quantity:	100 µg
Target:	Myosin Binding Subunit (MBS)
Binding Specificity:	N-Term
Reactivity:	Human, Mouse, Rat
Host:	Rabbit
Clonality:	Polyclonal
Conjugate:	This Myosin Binding Subunit antibody is un-conjugated
Application:	Western Blotting (WB), Flow Cytometry (FACS)

Product Details

Immunogen:	An amino acid sequence from the N-terminus of human Myosin Phosphatase (MKMADAKQKRNEQLKRW) was used as the immunogen for this Myosin Phosphatase antibody (100% homologous in human, mouse and rat).
Isotype:	IgG
Purification:	Antigen affinity

Target Details

Target:	Myosin Binding Subunit (MBS)
Alternative Name:	Myosin Phosphatase (MBS Products)
Background:	PPP1R12A, also called MYPT1 (Myosin phosphatase target subunit 1), is an enzyme that in humans is encoded by the PPP1R12A gene. Sequencing analysis showed that human

Target Details

PPP1R12A contains 1,030 amino acids with a calculated molecular mass of approximately 115 kD. PPP1R12A is the protein that regulates PP1 function in smooth muscle relaxation. The cellular MYPT1-PP1-delta -specific inhibitor CPI17 caused a loss of merlin function characterized by merlin phosphorylation, Ras activation, and transformation. Jin et al. concluded that PPP1R12A and its substrate merlin are part of a previously undescribed tumor suppressor cascade that can be hindered in 2 ways, by mutation of the NF2 gene and by upregulation of the oncoprotein CPI17.

UniProt: [O14974](#)

Application Details

Application Notes: The stated application concentrations are suggested starting amounts. Titration of the Myosin Phosphatase antibody may be required due to differences in protocols and secondary/substrate sensitivity.\. Western blot: 0.5-1 µg/mL, FACS: 1-3 µg/10⁶ cells

Restrictions: For Research Use only

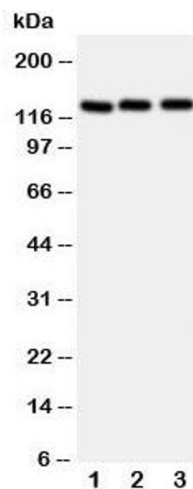
Handling

Buffer: 0.5 mg/mL if reconstituted with 0.2 mL sterile DI water

Storage: -20 °C

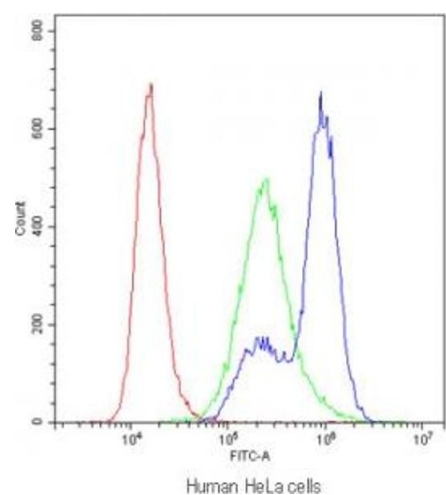
Storage Comment: After reconstitution, the Myosin Phosphatase antibody can be stored for up to one month at 4°C. For long-term, aliquot and store at -20°C. Avoid repeated freezing and thawing.

Images



Western Blotting

Image 1. Western blot testing of Myosin Phosphatase antibody and Lane 1: rat liver; 2: human 293T; 3: (h) HeLa cell lysate. Observed size: 110~130KD



Flow Cytometry

Image 2. Flow cytometry testing of human HeLa cells with Myosin Phosphatase antibody at 1ug/ 10^6 cells (blocked with goat sera)



Western Blotting

Image 3. Western blot testing of Myosin Phosphatase antibody and Lane 1: rat liver