

Datasheet for ABIN3031918
anti-MYLK antibody (AA 908-938)

5 Images

[Go to Product page](#)

Overview

Quantity:	0.4 mL
Target:	MYLK
Binding Specificity:	AA 908-938
Reactivity:	Human, Mouse
Host:	Rabbit
Clonality:	Polyclonal
Conjugate:	This MYLK antibody is un-conjugated
Application:	Western Blotting (WB), ELISA, Immunohistochemistry (IHC)

Product Details

Immunogen:	A portion of amino acids 908-938 from the human protein was used as the immunogen for this MLCK antibody.
Isotype:	Ig Fraction
Cross-Reactivity (Details):	Expected species reactivity: Rabbit
Purification:	Purified

Target Details

Target:	MYLK
Alternative Name:	MLCK (MYLK Products)
Background:	MLCK, a member of the Ser/Thr protein kinase family, is a calcium/calmodulin-dependent

Target Details

enzyme responsible for smooth muscle contraction via phosphorylation of a specific serine in the N-terminus of myosin light chains (MLC), an event that facilitates myosin interaction with actin filaments. It is a central determinant in the development of vascular permeability and tissue edema formation. In the nervous system it has been shown to control the growth initiation of astrocytic processes in culture and to participate in transmitter release at synapses formed between cultured sympathetic ganglion cells. MLCK acts as a critical participant in signaling sequences that result in fibroblast apoptosis. Smooth muscle and non-muscle isozymes are expressed in a wide variety of adult and fetal tissues and in cultured endothelium with qualitative expression appearing to be neither tissue- nor development-specific. Non-muscle isoform 2 is the dominant splice variant expressed in various tissues. The Telokin isoform, which binds calmodulin, has been found in a wide variety of adult and fetal tissues. MLCK is probably down-regulated by phosphorylation. The protein contains 1 fibronectin type III domain and 9 immunoglobulin-like C2-type domains.

UniProt: [Q15746](#)

Application Details

Application Notes: Titration of the MLCK antibody may be required due to differences in protocols and secondary/substrate sensitivity.\. IHC (Paraffin): 1:50-1:100,Western blot: 1:1000

Restrictions: For Research Use only

Handling

Format: Liquid

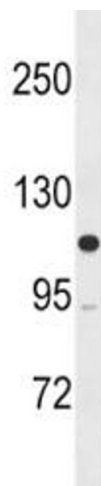
Buffer: In 1X PBS, pH 7.4, with 0.09 % sodium azide

Preservative: Sodium azide

Precaution of Use: This product contains Sodium azide: a POISONOUS AND HAZARDOUS SUBSTANCE which should be handled by trained staff only.

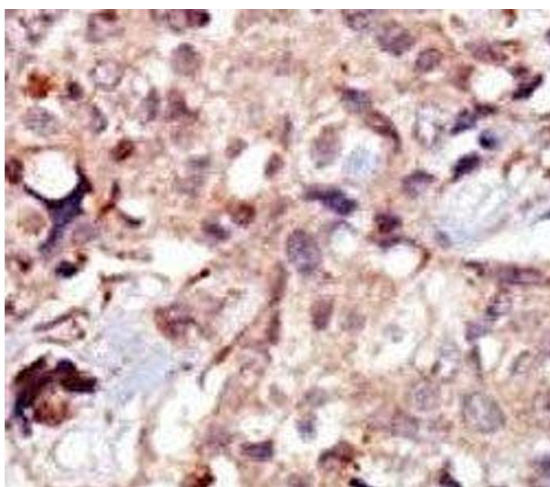
Storage: -20 °C

Storage Comment: Aliquot the MLCK antibody and store frozen at -20°C or colder. Avoid repeated freeze-thaw cycles.



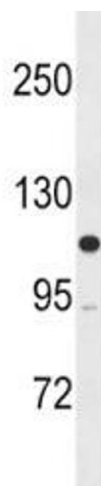
Western Blotting

Image 1. MLCK antibody western blot analysis in SK-BR-3 lysate



Immunohistochemistry

Image 2. IHC analysis of FFPE human breast carcinoma tissue stained with the MLCK antibody



Western Blotting

Image 3. MLCK antibody western blot analysis in SK-BR-3 lysate

Please check the [product details page](#) for more images. Overall 5 images are available for ABIN3031918.