

Datasheet for ABIN3031920
anti-MPRIP antibody (N-Term)



[Go to Product page](#)

2 Images

Overview

Quantity:	100 µg
Target:	MPRIP
Binding Specificity:	N-Term
Reactivity:	Human
Host:	Rabbit
Clonality:	Polyclonal
Conjugate:	This MPRIP antibody is un-conjugated
Application:	Western Blotting (WB)

Product Details

Immunogen:	An amino acid sequence from the N-terminus of human RIP3 (EVKAMASLDNEFVLRLE) was used as the immunogen for this RIP3 antibody.
Isotype:	IgG
Purification:	Antigen affinity

Target Details

Target:	MPRIP
Alternative Name:	RIP3 (MPRIP Products)
Background:	Receptor-interacting serine/threonine-protein kinase 3(RIPK3), also known as RIP3, is an enzyme that in humans is encoded by the RIPK3 gene. This gene is mapped to 14q12. The product of this gene is a member of the receptor-interacting protein (RIP) family of

Target Details

serine/threonine protein kinases, and contains a C-terminal domain unique from other RIP family members. The encoded protein is predominantly localized to the cytoplasm, and can undergo nucleocytoplasmic shuttling dependent on novel nuclear localization and export signals. It is a component of the tumor necrosis factor (TNF) receptor-I signaling complex, and can induce apoptosis and weakly activate the NF-kappaB transcription factor.

UniProt: [Q9Y572](#)

Application Details

Application Notes: The stated application concentrations are suggested starting amounts. Titration of the RIP3 antibody may be required due to differences in protocols and secondary/substrate sensitivity.\. Western blot: 0.5-1 µg/mL

Restrictions: For Research Use only

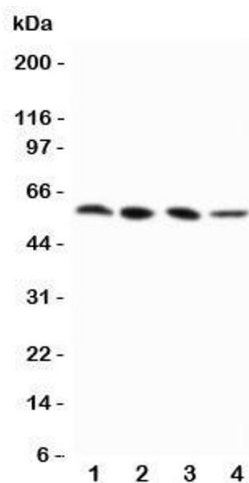
Handling

Buffer: 0.5 mg/mL if reconstituted with 0.2 mL sterile DI water

Storage: -20 °C

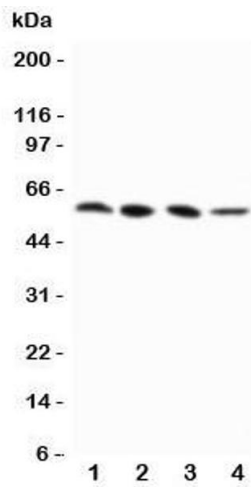
Storage Comment: After reconstitution, the RIP3 antibody can be stored for up to one month at 4°C. For long-term, aliquot and store at -20°C. Avoid repeated freezing and thawing.

Images



Western Blotting

Image 1. Western blot testing of RIP3 antibody and Lane 1: PANC



Western Blotting

Image 2. Western blot testing of RIP3 antibody and Lane 1: PANC; 2: SW620; 3: SKOV-3; 4: M231 cell lysate