

Datasheet for ABIN3031974
anti-Neuregulin 1 antibody (AA 198-229)

5 Images

[Go to Product page](#)

Overview

Quantity:	0.4 mL
Target:	Neuregulin 1 (NRG1)
Binding Specificity:	AA 198-229
Reactivity:	Human
Host:	Rabbit
Clonality:	Polyclonal
Conjugate:	This Neuregulin 1 antibody is un-conjugated
Application:	Western Blotting (WB), Immunohistochemistry (IHC), ELISA, Flow Cytometry (FACS)

Product Details

Immunogen:	A portion of amino acids 198-229 from the human protein was used as the immunogen for this NRG1 antibody.
Isotype:	Ig Fraction
Purification:	Purified

Target Details

Target:	Neuregulin 1 (NRG1)
Alternative Name:	NRG1 (NRG1 Products)
Background:	Neuregulin 1 (NRG1) was originally identified as a 44-kD glycoprotein that interacts with the NEU/ERBB2 receptor tyrosine kinase to increase its phosphorylation on tyrosine residues. It is known that an extraordinary variety of different isoforms are produced from the NRG1 gene by

Target Details

alternative splicing. These isoforms include heregulins (HRGs), glial growth factors (GGFs) and sensory and motor neuron-derived factor (SMDF). They are tissue-specifically expressed and differ significantly in their structure. The HRG isoforms all contain immunoglobulin (Ig) and epidermal growth factor-like (EGF-like) domains. GGF and GGF2 isoforms contain a kringle-like sequence plus Ig and EGF-like domains, and the SMDF isoform shares only the EGF-like domain with other isoforms. The receptors for all NRG1 isoforms are the ERBB family of tyrosine kinase transmembrane receptors. Through interaction with ERBB receptors, NRG1 isoforms induce the growth and differentiation of epithelial, neuronal, glial, and other types of cells.

UniProt: [Q02297](#)

Pathways: [RTK Signaling](#), [Fc-epsilon Receptor Signaling Pathway](#), [EGFR Signaling Pathway](#), [Neurotrophin Signaling Pathway](#), [Regulation of Muscle Cell Differentiation](#)

Application Details

Application Notes: Titration of the NRG1 antibody may be required due to differences in protocols and secondary/substrate sensitivity.\. Western blot: 1:1000,Flow Cytometry: 1:10-1:50,IHC (Paraffin): 1:50-1:100

Restrictions: For Research Use only

Handling

Format: Liquid

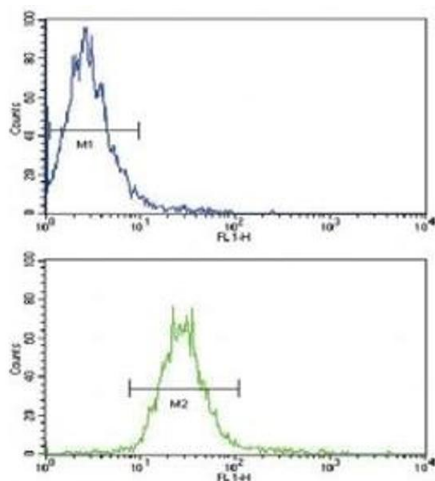
Buffer: In 1X PBS, pH 7.4, with 0.09 % sodium azide

Preservative: Sodium azide

Precaution of Use: This product contains Sodium azide: a POISONOUS AND HAZARDOUS SUBSTANCE which should be handled by trained staff only.

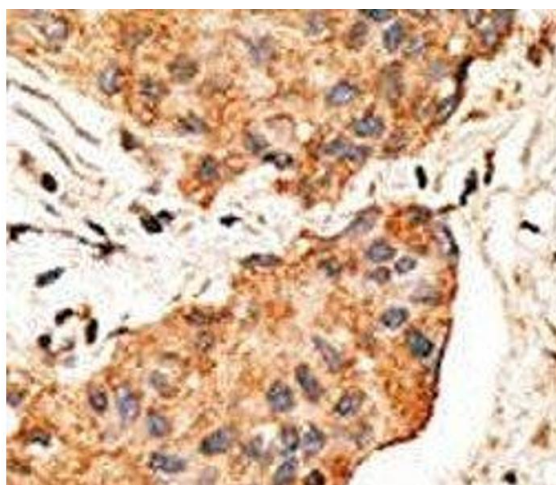
Storage: -20 °C

Storage Comment: Aliquot the NRG1 antibody and store frozen at -20°C or colder. Avoid repeated freeze-thaw cycles.



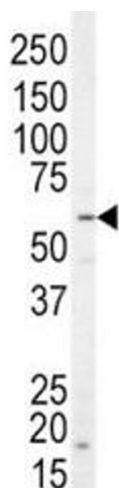
Flow Cytometry

Image 1. Flow cytometric analysis of NCI-H460 cells using NRG1 antibody (green) compared to a negative control (blue). FITC-conjugated goat-anti-rabbit secondary Ab was used for the analysis.



Immunohistochemistry

Image 2. IHC analysis of FFPE human breast carcinoma tissue stained with the NRG1 antibody



Western Blotting

Image 3. Western blot analysis of NRG1 antibody and SK-BR-3 lysate. Predicted molecular weight of multiple isoforms: 26-70 kDa.

Please check the [product details page](#) for more images. Overall 5 images are available for ABIN3031974.