

Datasheet for ABIN3031998
anti-NPC1 antibody (AA 591-620)

5 Images

[Go to Product page](#)

Overview

Quantity:	0.4 mL
Target:	NPC1
Binding Specificity:	AA 591-620
Reactivity:	Human
Host:	Rabbit
Clonality:	Polyclonal
Conjugate:	This NPC1 antibody is un-conjugated
Application:	ELISA, Western Blotting (WB), Immunohistochemistry (IHC), Immunofluorescence (IF)

Product Details

Immunogen:	A portion of amino acids 591-620 from the human protein was used as the immunogen for this NPC1 antibody.
Isotype:	Ig Fraction
Purification:	Antigen affinity purified

Target Details

Target:	NPC1
Alternative Name:	NPC1 (NPC1 Products)
Background:	This gene encodes a large protein that resides in the limiting membrane of endosomes and lysosomes and mediates intracellular cholesterol trafficking via binding of cholesterol to its N-terminal domain. It is predicted to have a cytoplasmic C-terminus, 13 transmembrane domains,

Target Details

and 3 large loops in the lumen of the endosome - the last loop being at the N-terminus. This protein transports low-density lipoproteins to late endosomal/lysosomal compartments where they are hydrolyzed and released as free cholesterol. Defects in this gene cause Niemann-Pick type C disease, a rare autosomal recessive neurodegenerative disorder characterized by over accumulation of cholesterol and glycosphingolipids in late endosomal/lysosomal compartments.

UniProt: [O15118](#)

Application Details

Application Notes: Titration of the NPC1 antibody may be required due to differences in protocols and secondary/substrate sensitivity.\. Western blot: 1:1000,Immunofluorescence: 1:10-1:50,IHC (Paraffin): 1:10-1:50

Restrictions: For Research Use only

Handling

Format: Liquid

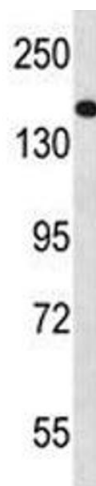
Buffer: In 1X PBS, pH 7.4, with 0.09 % sodium azide

Preservative: Sodium azide

Precaution of Use: This product contains Sodium azide: a POISONOUS AND HAZARDOUS SUBSTANCE which should be handled by trained staff only.

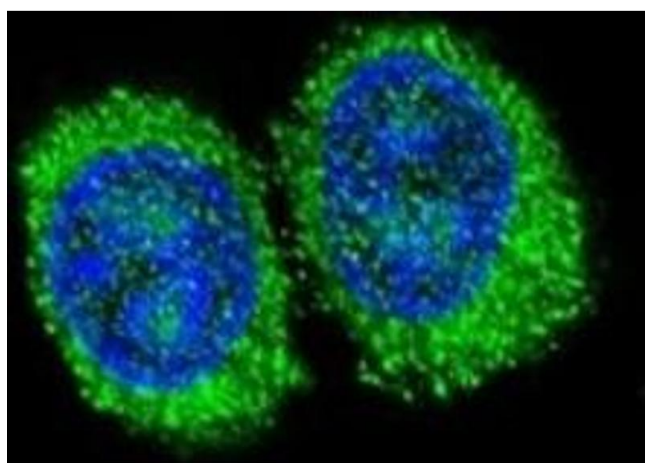
Storage: -20 °C

Storage Comment: Aliquot the NPC1 antibody and store frozen at -20°C or colder. Avoid repeated freeze-thaw cycles.



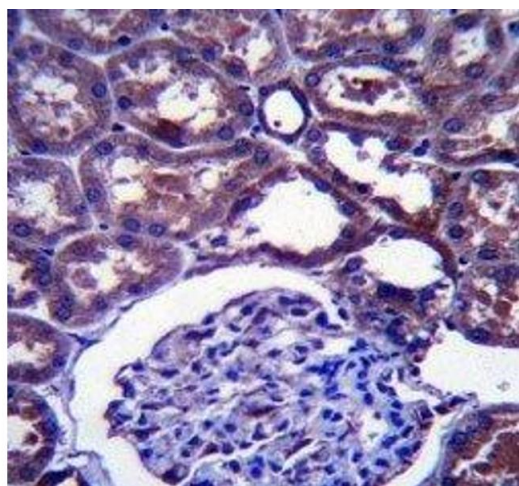
Western Blotting

Image 1. NPC1 antibody western blot analysis in NCI-H460 lysate.



Immunofluorescence

Image 2. Confocal immunofluorescent analysis of NPC1 antibody with 293 cells followed by Alexa Fluor 488-conjugated goat anti-rabbit IgG (green). DAPI was used as a nuclear counterstain (blue).



Immunohistochemistry

Image 3. NPC1 antibody immunohistochemistry analysis in formalin fixed and paraffin embedded human kidney tissue.

Please check the [product details page](#) for more images. Overall 5 images are available for ABIN3031998.