

Datasheet for ABIN3031999
anti-NEK2 antibody (AA 350-382)



[Go to Product page](#)

2 Images

Overview

Quantity:	0.4 mL
Target:	NEK2
Binding Specificity:	AA 350-382
Reactivity:	Human
Host:	Rabbit
Clonality:	Polyclonal
Conjugate:	This NEK2 antibody is un-conjugated
Application:	Western Blotting (WB), ELISA

Product Details

Immunogen:	A portion of amino acids 350-382 from the human protein was used as the immunogen for this NEK2 antibody.
Isotype:	Ig Fraction
Purification:	Purified

Target Details

Target:	NEK2
Alternative Name:	NEK2 (NEK2 Products)
Background:	NEK2 is closely related in its catalytic domain to the serine/threonine protein kinase NIMA of <i>Aspergillus nidulans</i> which is required for entry into mitosis and may function in parallel to the universal mitotic inducer p34cdc2. Like NIMA, the Nek2 protein is almost undetectable during

Target Details

G1 but accumulates progressively throughout S, reaching maximal levels in late G2. These observations demonstrate that NEK2 resembles Aspergillus NIMA, both in its catalytic domain, and cell cycle-dependent expression. Recombinant NEK2 is active as a serine/threonine-specific protein kinase and may undergo autophosphorylation. Both human NEK2 and fungal NIMA phosphorylate a similar, but not identical, set of proteins and synthetic peptides. NEK2 is shown to be expressed most abundantly in adult testis and there is increasing evidence that NEK2 is abnormally expressed in a wide variety of human cancers. This antibody is specific to isoform 2 of NEK2.

UniProt: [P51955](#)

Pathways: [M Phase](#)

Application Details

Application Notes: Titration of the NEK2 antibody may be required due to differences in protocols and secondary/substrate sensitivity.\. Western blot: 1:1000

Restrictions: For Research Use only

Handling

Format: Liquid

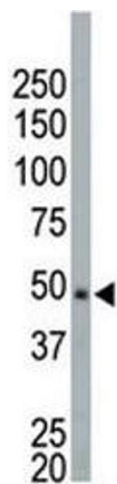
Buffer: In 1X PBS pH 7.4 with 0.09 % sodium azide

Preservative: Sodium azide

Precaution of Use: This product contains Sodium azide: a POISONOUS AND HAZARDOUS SUBSTANCE which should be handled by trained staff only.

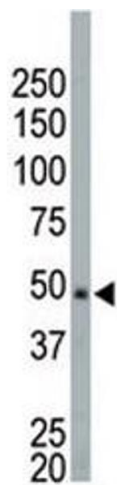
Storage: -20 °C

Storage Comment: Aliquot the NEK2 antibody and store frozen at -20°C or colder. Avoid repeated freeze-thaw cycles.



Western Blotting

Image 1. NEK2 antibody used in western blot to detect NEK2 in HeLa cell lysate



Western Blotting

Image 2. NEK2 antibody used in western blot to detect NEK2 in HeLa cell lysate