

Datasheet for ABIN3032003  
**anti-ENOS antibody (AA 1156-1183)**[Go to Product page](#)

## 5 Images

## Overview

Quantity:	0.4 mL
Target:	ENOS (NOS3)
Binding Specificity:	AA 1156-1183
Reactivity:	Human
Host:	Rabbit
Clonality:	Polyclonal
Conjugate:	This ENOS antibody is un-conjugated
Application:	Western Blotting (WB), ELISA, Immunofluorescence (IF), Flow Cytometry (FACS)

## Product Details

Immunogen:	A portion of amino acids 1156-1183 from the human protein was used as the immunogen for this eNos antibody.
Isotype:	Ig Fraction
Cross-Reactivity (Details):	Expected species reactivity: Mouse, Rat, Bovine, Pig
Purification:	Antigen affinity purified

## Target Details

Target:	ENOS (NOS3)
Alternative Name:	eNos ( <a href="#">NOS3 Products</a> )
Background:	ENos/NOS3 produces nitric oxide (NO) which is implicated in vascular smooth muscle

## Target Details

relaxation through a cGMP-mediated signal transduction pathway. NO mediates vascular endothelial growth factor (VEGF)-induced angiogenesis in coronary vessels and promotes blood clotting through the activation of platelets. [UniProt]

UniProt: [P29474](#)

Pathways: [ACE Inhibitor Pathway](#), [Regulation of Systemic Arterial Blood Pressure by Hormones](#), [Cellular Response to Molecule of Bacterial Origin](#), [Myometrial Relaxation and Contraction](#), [Signaling Events mediated by VEGFR1 and VEGFR2](#), [Thromboxane A2 Receptor Signaling](#), [VEGFR1 Specific Signals](#), [VEGF Signaling](#)

## Application Details

Application Notes: The stated application concentrations are suggested starting amounts. Titration of the eNos antibody may be required due to differences in protocols and secondary/substrate sensitivity.\. Western blot: 1:1000,Flow Cytometry: 1:10-1:50,Immunofluorescence: 1:10-1:50

Restrictions: For Research Use only

## Handling

Format: Liquid

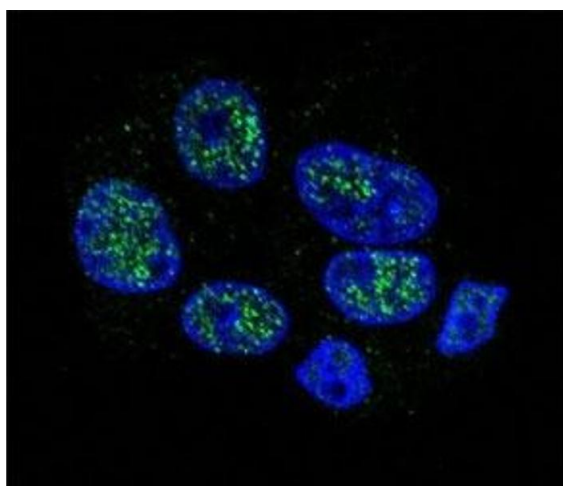
Buffer: In 1X PBS pH 7.4 with 0.09 % sodium azide

Preservative: Sodium azide

Precaution of Use: This product contains Sodium azide: a POISONOUS AND HAZARDOUS SUBSTANCE which should be handled by trained staff only.

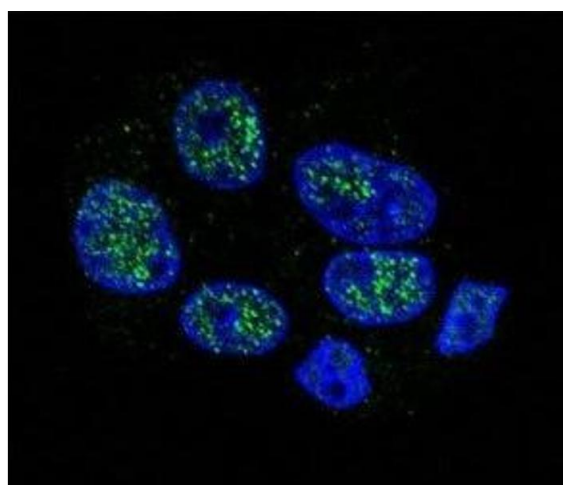
Storage: -20 °C

Storage Comment: Store at 4°C for up to one month. For long term, aliquot the eNos antibody and store frozen at -20°C or colder. Avoid repeated freeze-thaw cycles.



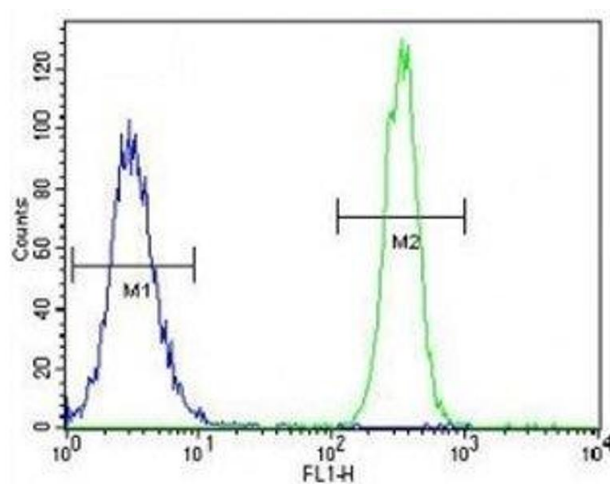
#### Immunofluorescence

**Image 1.** Confocal immunofluorescent analysis of eNos antibody with HepG2 cells followed by Alexa Fluor 488-conjugated goat anti-rabbit IgG (green). DAPI was used as a nuclear counterstain (blue).



#### Immunofluorescence

**Image 2.** Confocal immunofluorescent analysis of eNos antibody with HepG2 cells followed by Alexa Fluor 488-conjugated goat anti-rabbit IgG (green). DAPI was used as a nuclear counterstain (blue).



#### Flow Cytometry

**Image 3.** eNos antibody flow cytometric analysis of K562 cells (right histogram) compared to a negative control (left histogram). FITC-conjugated goat-anti-rabbit secondary Ab was used for the analysis.

Please check the [product details page](#) for more images. Overall 5 images are available for ABIN3032003.