

Datasheet for ABIN3032014
anti-NLRP10 antibody (AA 466-494)[Go to Product page](#)

2 Images

Overview

Quantity:	0.4 mL
Target:	NLRP10
Binding Specificity:	AA 466-494
Reactivity:	Human
Host:	Rabbit
Clonality:	Polyclonal
Conjugate:	This NLRP10 antibody is un-conjugated
Application:	ELISA, Western Blotting (WB)

Product Details

Immunogen:	A portion of amino acids 466-494 from the human protein was used as the immunogen for this NLRP10 antibody.
Isotype:	Ig Fraction
Purification:	Antigen affinity purified

Target Details

Target:	NLRP10
Alternative Name:	NLRP10 (NLRP10 Products)
Background:	Members of the NALP protein family typically contain a NACHT domain, a NACHT-associated domain (NAD), a C-terminal leucine-rich repeat (LRR) region, and an N-terminal pyrin domain (PYD). The protein encoded by this gene belongs to the NALP protein family despite lacking the

Target Details

LRR region. This protein likely plays a regulatory role in the innate immune system. The protein belongs to the signal-induced multiprotein complex, the inflammasome, that activates the pro-inflammatory caspases, caspase-1 and caspase-5. Other experiments indicate that this gene acts as a multifunctional negative regulator of inflammation and apoptosis. [provided by RefSeq].

UniProt: [Q86W26](#)

Pathways: [Inflammasome](#)

Application Details

Application Notes: Titration of the NLRP10 antibody may be required due to differences in protocols and secondary/substrate sensitivity.\. Western blot: 1:1000

Restrictions: For Research Use only

Handling

Format: Liquid

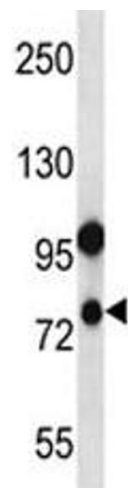
Buffer: In 1X PBS pH 7.4 with 0.09 % sodium azide

Preservative: Sodium azide

Precaution of Use: This product contains Sodium azide: a POISONOUS AND HAZARDOUS SUBSTANCE which should be handled by trained staff only.

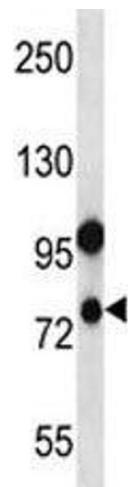
Storage: -20 °C

Storage Comment: Aliquot the NLRP10 antibody and store frozen at -20°C or colder. Avoid repeated freeze-thaw cycles.



Western Blotting

Image 1. NLRP10 antibody western blot analysis in human placenta tissue lysate.



Western Blotting

Image 2. NLRP10 antibody western blot analysis in human placenta tissue lysate.