

Datasheet for ABIN3032015  
**anti-NLRP12 antibody (AA 183-212)**[Go to Product page](#)

## 3 Images

## Overview

Quantity:	0.4 mL
Target:	NLRP12
Binding Specificity:	AA 183-212
Reactivity:	Human
Host:	Rabbit
Clonality:	Polyclonal
Conjugate:	This NLRP12 antibody is un-conjugated
Application:	Western Blotting (WB), ELISA, Immunohistochemistry (IHC)

## Product Details

Immunogen:	A portion of amino acids 183-212 from the human protein was used as the immunogen for this NLRP12 antibody.
Isotype:	Ig Fraction
Purification:	Antigen affinity purified

## Target Details

Target:	NLRP12
Alternative Name:	NLRP12 ( <a href="#">NLRP12 Products</a> )
Background:	This gene encodes a member of the CATERPILLER family of cytoplasmic proteins. The encoded protein, which contains an N-terminal pyrin domain, a NACHT domain, a NACHT-associated domain, and a C-terminus leucine-rich repeat region, functions as an attenuating

## Target Details

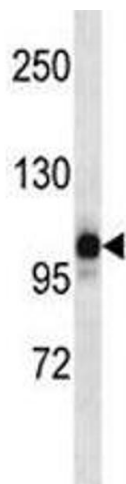
factor of inflammation by suppressing inflammatory responses in activated monocytes. Alternatively spliced transcript variants encoding distinct isoforms have been described but the full-length nature of some of these has not been determined.

UniProt:	<a href="#">P59046</a>
Pathways:	<a href="#">Positive Regulation of Endopeptidase Activity</a> , <a href="#">Inflammasome</a>

## Application Details

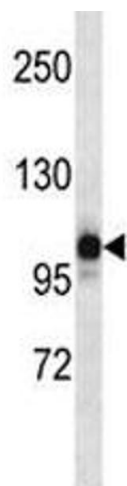
Application Notes:	Titration of the NLRP12 antibody may be required due to differences in protocols and secondary/substrate sensitivity.\. Western blot: 1:1000,IHC (Paraffin): 1:10-1:50
Restrictions:	For Research Use only
Handling	
Format:	Liquid
Buffer:	In 1X PBS pH 7.4 with 0.09 % sodium azide
Preservative:	Sodium azide
Precaution of Use:	This product contains Sodium azide: a POISONOUS AND HAZARDOUS SUBSTANCE which should be handled by trained staff only.
Storage:	-20 °C
Storage Comment:	Aliquot the NLRP12 antibody and store frozen at -20°C or colder. Avoid repeated freeze-thaw cycles.

## Images



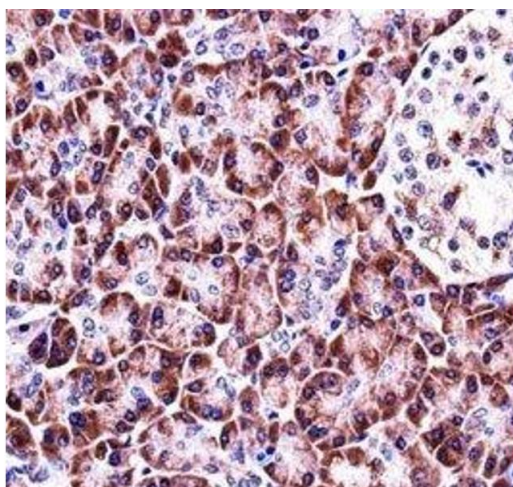
### Western Blotting

**Image 1.** NLRP12 antibody western blot analysis in human placenta tissue lysate.



#### Western Blotting

**Image 2.** NLRP12 antibody western blot analysis in human placenta tissue lysate.



#### Immunohistochemistry

**Image 3.** NLRP12 antibody immunohistochemistry analysis in formalin fixed and paraffin embedded human pancreas tissue.