

Datasheet for ABIN3032016

anti-NLRP12 antibody**3** Images[Go to Product page](#)

Overview

Quantity:	0.4 mL
Target:	NLRP12
Reactivity:	Human, Mouse
Host:	Rabbit
Clonality:	Polyclonal
Conjugate:	This NLRP12 antibody is un-conjugated
Application:	Western Blotting (WB), ELISA

Product Details

Immunogen:	This anti-NLRP12 antibody was produced from rabbits immunized with human NLRP12 recombinant protein.
Isotype:	Ig Fraction
Purification:	Antigen affinity purified

Target Details

Target:	NLRP12
Alternative Name:	NLRP12 (NLRP12 Products)
Background:	NALPs are cytoplasmic proteins that form a subfamily within the larger CATERPILLER protein family. Most short NALPs, such as NALP12, have an N-terminal pyrin (MEFV, MIM 608107) domain (PYD), followed by a NACHT domain, a NACHT-associated domain (NAD), and a C-terminal leucine-rich repeat (LRR) region. The long NALP, NALP1 (MIM 606636), also has a C-

Target Details

terminal extension containing a function to find domain (FIIND) and a caspase recruitment domain (CARD). NALPs are implicated in the activation of proinflammatory caspases (e.g., CASP1, MIM 147678) via their involvement in multiprotein complexes called inflammasomes.

UniProt: [P59046](#)

Pathways: [Positive Regulation of Endopeptidase Activity](#), [Inflammasome](#)

Application Details

Application Notes: Titration of the anti-NLRP12 antibody may be required due to differences in protocols and secondary/substrate sensitivity.\. Western blot: 1:1000

Restrictions: For Research Use only

Handling

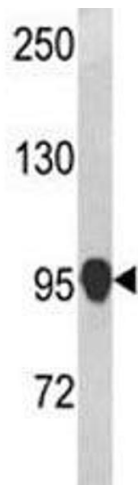
Format:	Liquid
Buffer:	In 1X PBS pH 7.4 with 0.09 % sodium azide
Preservative:	Sodium azide
Precaution of Use:	This product contains Sodium azide: a POISONOUS AND HAZARDOUS SUBSTANCE which should be handled by trained staff only.
Storage:	-20 °C
Storage Comment:	Aliquot the anti-NLRP12 antibody and store frozen at -20°C or colder. Avoid repeated freeze-thaw cycles.

Images



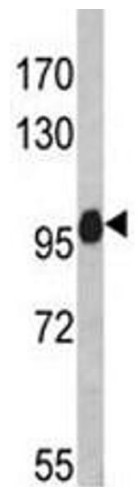
Western Blotting

Image 1. Western blot analysis of anti-NLRP12 antibody and HL-60 lysate



Western Blotting

Image 2. Western blot analysis of anti-NLRP12 antibody and mouse testis tissue lysate



Western Blotting

Image 3. Western blot analysis of anti-NLRP12 antibody and HL-60 lysate