

Datasheet for ABIN3032026  
**anti-NCAPH2 antibody (AA 198-227)**[Go to Product page](#)

## 2 Images

## Overview

Quantity:	0.4 mL
Target:	NCAPH2
Binding Specificity:	AA 198-227
Reactivity:	Human
Host:	Rabbit
Clonality:	Polyclonal
Conjugate:	This NCAPH2 antibody is un-conjugated
Application:	Western Blotting (WB), ELISA

## Product Details

Immunogen:	A portion of amino acids 198-227 from the human protein was used as the immunogen for this NCAPH2 antibody.
Isotype:	Ig Fraction
Purification:	Purified

## Target Details

Target:	NCAPH2
Alternative Name:	NCAPH2 ( <a href="#">NCAPH2 Products</a> )
Background:	Structural maintenance of chromosomes (SMC) and non-SMC condensin proteins associate into complexes that have been implicated in the process of chromosome condensation. A crucial prerequisite for accurate segregation of replicated sister chromatids is the condensation

## Target Details

of the chromosomes into a manageable form prior to metaphase. The condensin I complex consists of two SMC subunits, SMC2 and SMC4, and three non-SMC subunits, CAP-H, CAP-G, and CAP-D2. An alternative complex, the condensin II complex, contains alternate non-SMC subunits, CAP-G2, CAP-H2, and CAP-D3. CAP-H2 is also known as Non-SMC condensin II complex, subunit H2 (NCAPH2) or kleisin beta isoform 2. The three non-SMC subunits in the condensing complexes form a regulatory subcomplex that is required to activate the SMC ATPases and to promote mitosis-specific chromatin binding of the holocomplex. The precise individual functions of each non-SMC protein in activation remain to be determined.

UniProt: [Q6IBW4](#)

## Application Details

Application Notes: Titration of the NCAPH2 antibody may be required due to differences in protocols and secondary/substrate sensitivity.\. Western blot: 1:1000

Restrictions: For Research Use only

## Handling

Format: Liquid

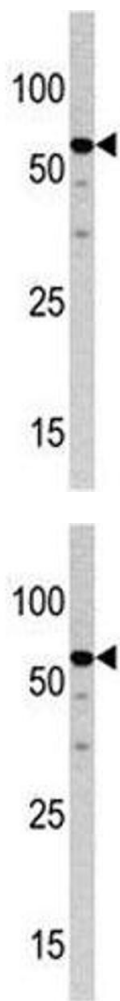
Buffer: In 1X PBS pH 7.4 with 0.09 % sodium azide

Preservative: Sodium azide

Precaution of Use: This product contains Sodium azide: a POISONOUS AND HAZARDOUS SUBSTANCE which should be handled by trained staff only.

Storage: -20 °C

Storage Comment: Aliquot the NCAPH2 antibody and store frozen at -20°C or colder. Avoid repeated freeze-thaw cycles.



Western Blotting

**Image 1.** Western blot analysis of NCAPH2 antibody and HepG2 lysate.

Western Blotting

**Image 2.** Western blot analysis of NCAPH2 antibody and HepG2 lysate.