



[Go to Product page](#)

Datasheet for ABIN3032032

## anti-NOTCH3 antibody (AA 2291-2321)

### 5 Images

#### Overview

Quantity:	0.4 mL
Target:	NOTCH3
Binding Specificity:	AA 2291-2321
Reactivity:	Human, Mouse
Host:	Rabbit
Clonality:	Polyclonal
Conjugate:	This NOTCH3 antibody is un-conjugated
Application:	Western Blotting (WB), ELISA, Immunohistochemistry (IHC), Immunofluorescence (IF)

#### Product Details

Immunogen:	A portion of amino acids 2291-2321 from the human protein was used as the immunogen for this NOTCH3 antibody.
Isotype:	Ig Fraction
Purification:	Purified

#### Target Details

Target:	NOTCH3
Alternative Name:	NOTCH3 ( <a href="#">NOTCH3 Products</a> )
Background:	NOTCH3 is the third discovered human homologue of the Drosophila melanogaster type I membrane protein notch. In Drosophila, notch interaction with its cell-bound ligands (delta, serrate) establishes an intercellular signalling pathway that plays a key role in neural

## Target Details

---

development. Homologues of the notch-ligands have also been identified in human, but precise interactions between these ligands and the human notch homologues remains to be determined. Mutations in NOTCH3 have been identified as the underlying cause of cerebral autosomal dominant arteriopathy with subcortical infarcts and leukoencephalopathy (CADASIL).

UniProt: [Q9UM47](#)

Pathways: [Notch Signaling](#)

## Application Details

---

Application Notes: Titration of the NOTCH3 antibody may be required due to differences in protocols and secondary/substrate sensitivity. Western blot: 1:1000, Immunofluorescence: 1:10-1:50, IHC (Paraffin): 1:50-1:100

Restrictions: For Research Use only

## Handling

---

Format: Liquid

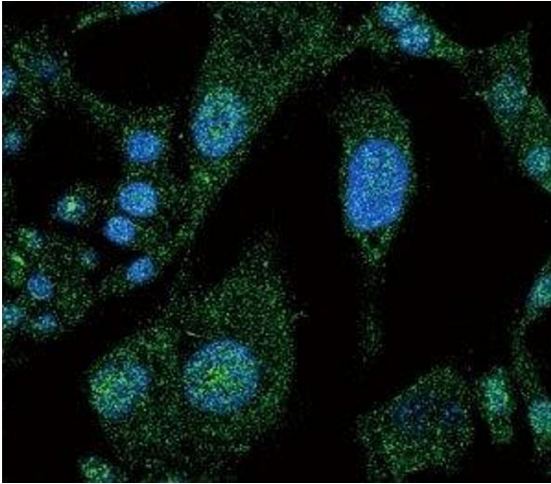
Buffer: In 1X PBS, pH 7.4, with 0.09 % sodium azide

Preservative: Sodium azide

Precaution of Use: This product contains Sodium azide: a POISONOUS AND HAZARDOUS SUBSTANCE which should be handled by trained staff only.

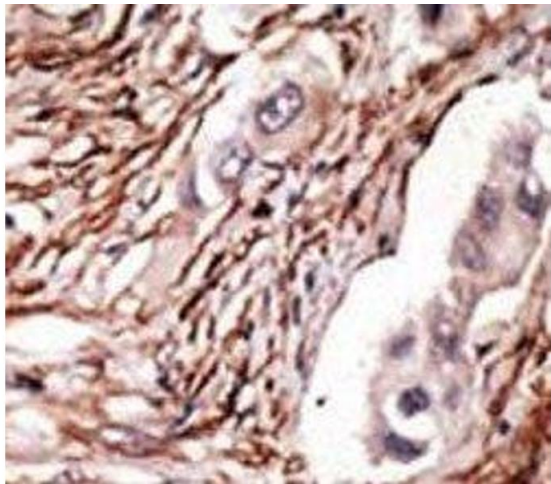
Storage: -20 °C

Storage Comment: Aliquot the NOTCH3 antibody and store frozen at -20°C or colder. Avoid repeated freeze-thaw cycles.



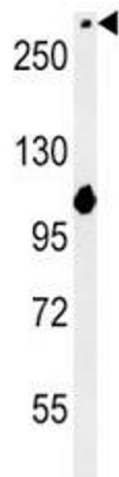
#### Immunofluorescence

**Image 1.** Confocal immunofluorescent analysis of NOTCH3 antibody with HepG2 cells followed by Alexa Fluor 488-conjugated goat anti-rabbit IgG (green). DAPI was used as a nuclear counterstain (blue).



#### Immunohistochemistry

**Image 2.** IHC analysis of FFPE human breast carcinoma tissue stained with the NOTCH3 antibody



#### Western Blotting

**Image 3.** NOTCH3 western blot analysis in mouse NIH3T3 lysate

Please check the [product details page](#) for more images. Overall 5 images are available for ABIN3032032.