

Datasheet for ABIN3032033  
**anti-NOTCH4 antibody (C-Term)**[Go to Product page](#)

## 2 Images

## Overview

Quantity:	0.4 mL
Target:	NOTCH4
Binding Specificity:	C-Term
Reactivity:	Human
Host:	Rabbit
Clonality:	Polyclonal
Conjugate:	This NOTCH4 antibody is un-conjugated
Application:	Western Blotting (WB), ELISA

## Product Details

Immunogen:	This NOTCH4 antibody was produced from a rabbit immunized with a KLH conjugated synthetic peptide between 1819-1851 amino acids from the C-terminal region of human NOTCH4.
Isotype:	Ig Fraction
Purification:	Antigen affinity purified

## Target Details

Target:	NOTCH4
Alternative Name:	NOTCH4 ( <a href="#">NOTCH4 Products</a> )
Background:	Functions as a receptor for membrane-bound ligands Jagged1, Jagged2 and Delta1 to regulate cell-fate determination. Upon ligand activation through the released notch intracellular domain

## Target Details

(NICD) it forms a transcriptional activator complex with RBPJ/RBPSUH and activates genes of the enhancer of split locus. Affects the implementation of differentiation, proliferation and apoptotic programs. May regulate branching morphogenesis in the developing vascular system (By similarity).

UniProt: [Q99466](#)

Pathways: [Notch Signaling](#)

## Application Details

Application Notes: Titration of the NOTCH4 antibody may be required due to differences in protocols and secondary/substrate sensitivity.\. Western blot: 1:2000

Restrictions: For Research Use only

## Handling

Format: Liquid

Buffer: In 1X PBS, pH 7.4, with 0.09 % sodium azide

Preservative: Sodium azide

Precaution of Use: This product contains Sodium azide: a POISONOUS AND HAZARDOUS SUBSTANCE which should be handled by trained staff only.

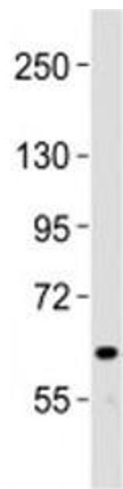
Storage: -20 °C

Storage Comment: Aliquot the NOTCH4 antibody and store frozen at -20°C or colder. Avoid repeated freeze-thaw cycles.



Western Blotting

**Image 1.** Western blot testing of NOTCH4 antibody at 1:2000 dilution + human liver lysate; Predicted band size : 210 kDa.



Western Blotting

**Image 2.** Western blot testing of NOTCH4 antibody at 1:2000 dilution + human liver lysate