

Datasheet for ABIN3032040
anti-NFATC4 antibody (AA 744-773)[Go to Product page](#)

3 Images

Overview

Quantity:	0.4 mL
Target:	NFATC4
Binding Specificity:	AA 744-773
Reactivity:	Human
Host:	Rabbit
Clonality:	Polyclonal
Conjugate:	This NFATC4 antibody is un-conjugated
Application:	Western Blotting (WB), ELISA, Immunofluorescence (IF)

Product Details

Immunogen:	A portion of amino acids 744-773 from the human protein was used as the immunogen for this NFATC4 antibody.
Isotype:	Ig Fraction
Purification:	Antigen affinity purified

Target Details

Target:	NFATC4
Alternative Name:	NFATC4 (NFATC4 Products)
Background:	The product of this gene is a member of the nuclear factors of activated T cells DNA-binding transcription complex. This complex consists of at least two components: a preexisting cytosolic component that translocates to the nucleus upon T cell receptor (TCR) stimulation

Target Details

and an inducible nuclear component. Other members of this family of nuclear factors of activated T cells also participate in the formation of this complex. The product of this gene plays a role in the inducible expression of cytokine genes in T cells, especially in the induction of the IL-2 and IL-4. Alternatively spliced transcript variants encoding different isoforms have been noted for this gene. [provided by RefSeq].

UniProt: [Q14934](#)

Pathways: [RTK Signaling](#), [WNT Signaling](#)

Application Details

Application Notes: Titration of the NFATC4 antibody may be required due to differences in protocols and secondary/substrate sensitivity.\. Western blot: 1:1000,Immunofluorescence: 1:10-1:50

Restrictions: For Research Use only

Handling

Format: Liquid

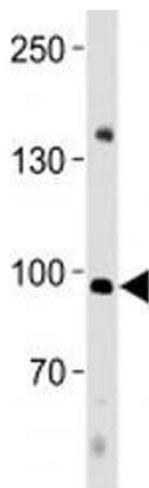
Buffer: In 1X PBS, pH 7.4, with 0.09 % sodium azide

Preservative: Sodium azide

Precaution of Use: This product contains Sodium azide: a POISONOUS AND HAZARDOUS SUBSTANCE which should be handled by trained staff only.

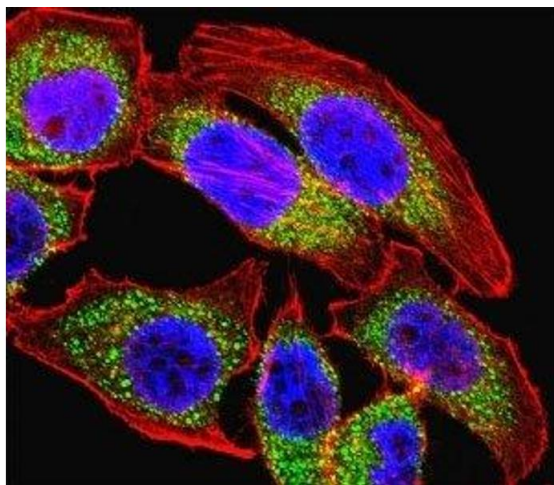
Storage: -20 °C

Storage Comment: Aliquot the NFATC4 antibody and store frozen at -20°C or colder. Avoid repeated freeze-thaw cycles.



Western Blotting

Image 1. NFATC4 antibody western blot analysis in human placenta tissue lysate.



Immunofluorescence

Image 2. Fluorescent confocal image of U251 cell stained with NFATC4 antibody. NFATC4 immunoreactivity is localized to the cytoplasm.



Western Blotting

Image 3. NFATC4 antibody western blot analysis in human placenta tissue lysate.