

Datasheet for ABIN3032057

**anti-NCOA1 antibody (AA 1338-1367)**[Go to Product page](#)**3** Images

## Overview

Quantity:	0.4 mL
Target:	NCOA1
Binding Specificity:	AA 1338-1367
Reactivity:	Human
Host:	Rabbit
Clonality:	Polyclonal
Conjugate:	This NCOA1 antibody is un-conjugated
Application:	Western Blotting (WB), ELISA, Immunohistochemistry (IHC)

## Product Details

Immunogen:	A portion of amino acids 1338-1367 from the human protein was used as the immunogen for this SRC-1 antibody.
Isotype:	Ig Fraction
Cross-Reactivity (Details):	Expected species reactivity: Pig
Purification:	Purified

## Target Details

Target:	NCOA1
Alternative Name:	SRC-1 ( <a href="#">NCOA1 Products</a> )
Background:	SRC-1/NCOA1 acts as a transcriptional coactivator for steroid and nuclear hormone receptors.

## Target Details

It is a member of the p160/steroid receptor coactivator (SRC) family and like other family members has histone acetyltransferase activity and contains a nuclear localization signal, as well as bHLH and PAS domains. This protein binds nuclear receptors directly and stimulates the transcriptional activities in a hormone-dependent fashion.

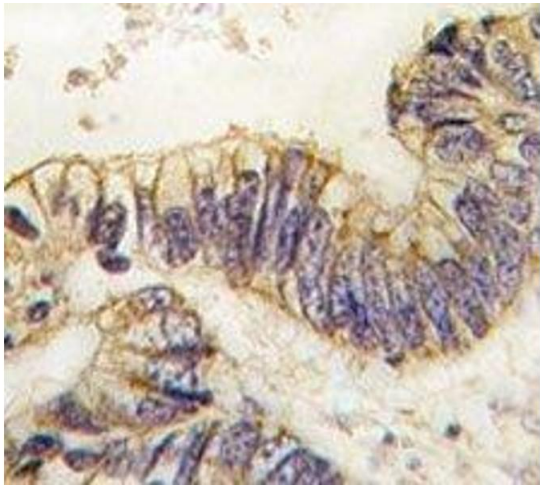
UniProt:	<a href="#">Q15788</a>
Pathways:	<a href="#">Intracellular Steroid Hormone Receptor Signaling Pathway</a> , <a href="#">Nuclear Hormone Receptor Binding</a> , <a href="#">Chromatin Binding</a> , <a href="#">Regulation of Lipid Metabolism by PPARalpha</a>

## Application Details

Application Notes:	Titration of the SRC-1 antibody may be required due to differences in protocols and secondary/substrate sensitivity.\. Western blot: 1:1000,IHC (Paraffin): 1:10-1:50
Restrictions:	For Research Use only

## Handling

Format:	Liquid
Buffer:	In 1X PBS, pH 7.4, with 0.09 % sodium azide
Preservative:	Sodium azide
Precaution of Use:	This product contains Sodium azide: a POISONOUS AND HAZARDOUS SUBSTANCE which should be handled by trained staff only.
Storage:	-20 °C
Storage Comment:	Aliquot the SRC-1 antibody and store frozen at -20°C or colder. Avoid repeated freeze-thaw cycles.



Immunohistochemistry

**Image 1.** IHC analysis of FFPE human colon carcinoma tissue stained with SRC-1 antibody



Western Blotting

**Image 2.** SRC-1 antibody western blot analysis in CEM lysate.

Western Blotting

**Image 3.** SRC-1 antibody western blot analysis in CEM lysate.