

Datasheet for ABIN3032068
anti-NRF1 antibody (AA 226-255)



[Go to Product page](#)

2 Images

Overview

Quantity:	0.4 mL
Target:	NRF1
Binding Specificity:	AA 226-255
Reactivity:	Human
Host:	Rabbit
Clonality:	Polyclonal
Conjugate:	This NRF1 antibody is un-conjugated
Application:	Western Blotting (WB), ELISA

Product Details

Immunogen:	A portion of amino acids 226-255 from the human protein was used as the immunogen for this NRF1 antibody.
Isotype:	Ig Fraction
Cross-Reactivity (Details):	Expected species reactivity: Mouse, Zebrafish
Purification:	Antigen affinity purified

Target Details

Target:	NRF1
Alternative Name:	NRF1 (NRF1 Products)
Background:	This gene encodes a protein that homodimerizes and functions as a transcription factor which

Target Details

activates the expression of some key metabolic genes regulating cellular growth and nuclear genes required for respiration, heme biosynthesis, and mitochondrial DNA transcription and replication. The protein has also been associated with the regulation of neurite outgrowth. Alternate transcriptional splice variants, which encode the same protein, have been characterized. Additional variants encoding different protein isoforms have been described but they have not been fully characterized. Confusion has occurred in bibliographic databases due to the shared symbol of NRF1 for this gene and for 'nuclear factor (erythroid-derived 2)-like 1' which has an official symbol of NFE2L1.

UniProt: [Q16656](#)

Pathways: [Regulation of Lipid Metabolism by PPARalpha](#)

Application Details

Application Notes: Titration of the NRF1 antibody may be required due to differences in protocols and secondary/substrate sensitivity.\. Western blot: 1:1000

Restrictions: For Research Use only

Handling

Format: Liquid

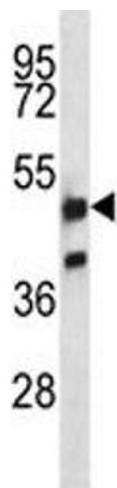
Buffer: In 1X PBS, pH 7.4, with 0.09 % sodium azide

Preservative: Sodium azide

Precaution of Use: This product contains Sodium azide: a POISONOUS AND HAZARDOUS SUBSTANCE which should be handled by trained staff only.

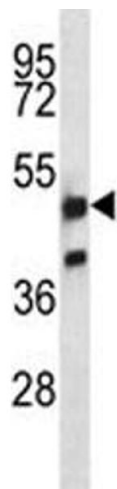
Storage: -20 °C

Storage Comment: Aliquot the NRF1 antibody and store frozen at -20°C or colder. Avoid repeated freeze-thaw cycles.



Western Blotting

Image 1. NRF1 antibody western blot analysis in K562 lysate.



Western Blotting

Image 2. NRF1 antibody western blot analysis in K562 lysate.