

Datasheet for ABIN3032071
anti-Nucleolin antibody



[Go to Product page](#)

7 Images

Overview

Quantity:	0.4 mL
Target:	Nucleolin (NCL)
Reactivity:	Human
Host:	Rabbit
Clonality:	Polyclonal
Conjugate:	This Nucleolin antibody is un-conjugated
Application:	Western Blotting (WB), Immunohistochemistry (IHC), Immunofluorescence (IF), ELISA

Product Details

Immunogen:	The amino acid sequence used as immunogen for this Nucleolin antibody is found between 425-455 of the human protein.
Isotype:	Ig Fraction
Cross-Reactivity (Details):	Expected species reactivity: Primate
Purification:	Antigen affinity purified

Target Details

Target:	Nucleolin (NCL)
Alternative Name:	Nucleolin (NCL Products)
Background:	Nucleolin (NCL), a eukaryotic nucleolar phosphoprotein, is involved in the synthesis and maturation of ribosomes. It is located mainly in dense fibrillar regions of the nucleolus. Human NCL gene consists of 14 exons with 13 introns and spans approximately 11kb. The intron 11 of

Target Details

the NCL gene encodes a small nucleolar RNA, termed U20. [Wiki]

UniProt: [P19338](#)

Pathways: [Ribonucleoprotein Complex Subunit Organization](#)

Application Details

Application Notes: The stated application concentrations are suggested starting amounts. Due to differences in protocols and secondary/substrate sensitivity, it may be necessary to titrate the Nucleolin antibody for optimal performance.\. Western blot: 1:1000,IHC (Paraffin): 1:50-1:100,Immunofluorescence: 1:10-1:50

Restrictions: For Research Use only

Handling

Format: Liquid

Buffer: In 1X PBS, pH 7.4, with 0.09 % sodium azide

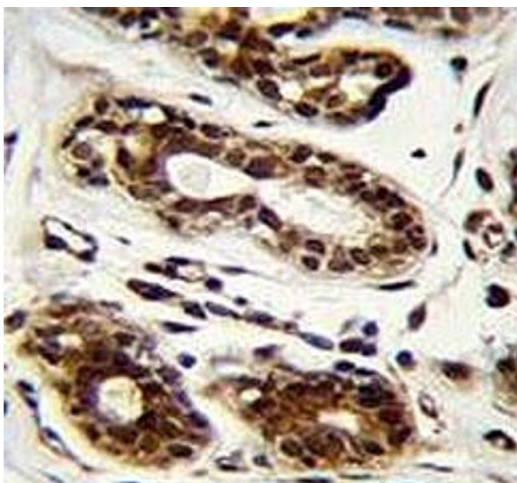
Preservative: Sodium azide

Precaution of Use: This product contains Sodium azide: a POISONOUS AND HAZARDOUS SUBSTANCE which should be handled by trained staff only.

Storage: -20 °C

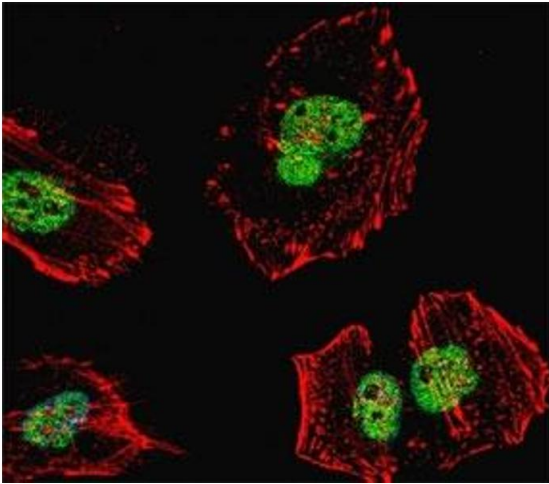
Storage Comment: The Nucleolin antibody should be aliquoted and and stored frozen at -20°C. Avoid repeat freeze-thaws.

Images



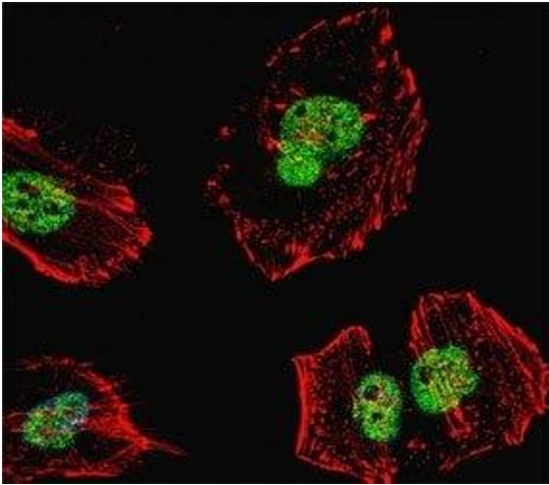
Immunohistochemistry

Image 1. Nucleolin antibody immunohistochemistry analysis in formalin fixed and paraffin embedded human breast tissue.



Immunofluorescence

Image 2. Fluorescent confocal image of HeLa cell stained with Nucleolin antibody at 1:25. NCL immunoreactivity is localized to the nucleus.



Immunofluorescence

Image 3. Fluorescent confocal image of HeLa cell stained with Nucleolin antibody at 1:25. NCL immunoreactivity is localized to the nucleus.

Please check the [product details page](#) for more images. Overall 7 images are available for ABIN3032071.