

Datasheet for ABIN3032075  
**anti-NPM1 antibody (AA 7-33)**

## 6 Images

[Go to Product page](#)

## Overview

Quantity:	0.4 mL
Target:	NPM1
Binding Specificity:	AA 7-33
Reactivity:	Human
Host:	Rabbit
Clonality:	Polyclonal
Conjugate:	This NPM1 antibody is un-conjugated
Application:	Western Blotting (WB), Immunohistochemistry (IHC), ELISA, Immunofluorescence (IF), Flow Cytometry (FACS)

## Product Details

Immunogen:	A portion of amino acids 7-33 from the human protein was used as the immunogen for this NPM1 antibody.
Isotype:	Ig Fraction
Cross-Reactivity (Details):	Expected species reactivity: Mouse, Rat
Purification:	Purified

## Target Details

Target:	NPM1
Alternative Name:	NPM1 ( <a href="#">NPM1 Products</a> )

## Target Details

**Background:** Nucleophosmin/NPM1 is a ubiquitously expressed nucleolar protein that shuttles between the nucleus and cytoplasm. It is implicated in multiple functions, including ribosomal protein assembly and transport, control of centrosome duplication, and regulation of the tumor suppressor ARF. NPM1 mutations that relocalize NPM1 from the nucleus into the cytoplasm are associated with development of acute myeloid leukemia.

**UniProt:** [P06748](#)

**Pathways:** [Ribonucleoprotein Complex Subunit Organization](#), [Ribosome Assembly](#)

## Application Details

**Application Notes:** Titration of the NPM1 antibody may be required due to differences in protocols and secondary/substrate sensitivity.\. Western blot: 1:1000,Immunofluorescence: 1:10-1:50,IHC (Paraffin): 1:10-1:50,Flow Cytometry: 1:10-1:50

**Restrictions:** For Research Use only

## Handling

**Format:** Liquid

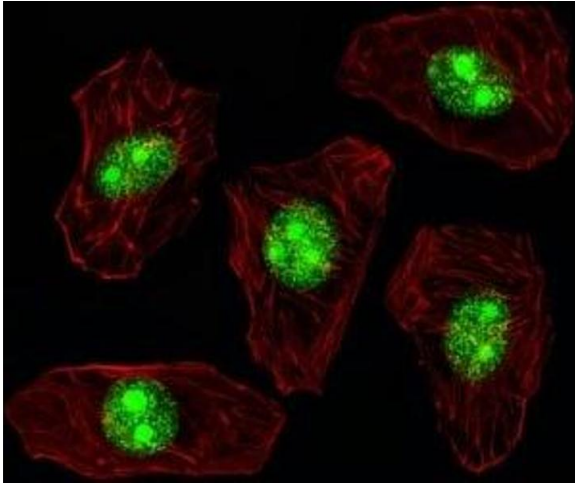
**Buffer:** In 1X PBS, pH 7.4, with 0.09 % sodium azide

**Preservative:** Sodium azide

**Precaution of Use:** This product contains Sodium azide: a POISONOUS AND HAZARDOUS SUBSTANCE which should be handled by trained staff only.

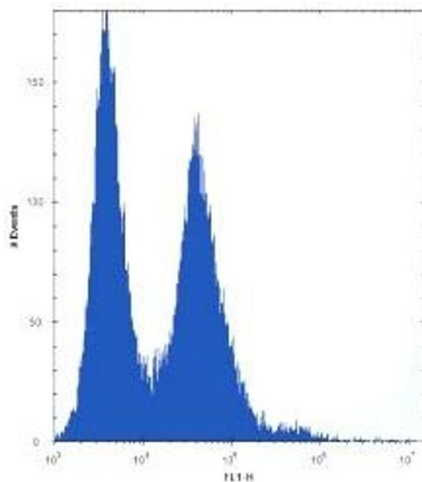
**Storage:** -20 °C

**Storage Comment:** Aliquot the NPM1 antibody and store frozen at -20°C or colder. Avoid repeated freeze-thaw cycles.



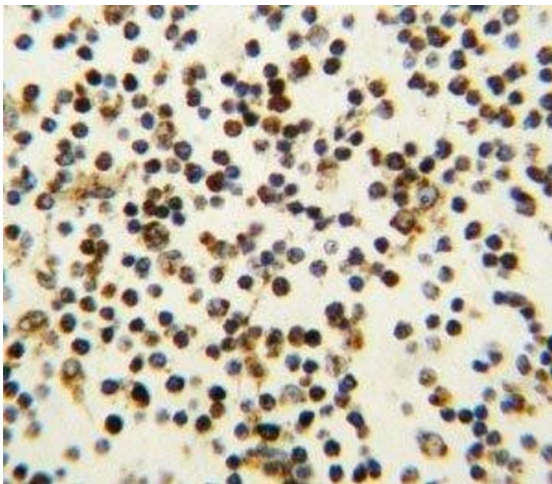
#### Immunofluorescence

**Image 1.** Fluorescent image of A549 cell stained with NPM1 antibody. Alexa Fluor 488 secondary was used (green). NPM1 immunoreactivity is localized to the nucleus and nucleolus.



#### Flow Cytometry

**Image 2.** NPM1 antibody flow cytometric analysis of HeLa cells (right histogram) compared to a [negative control](#) (left histogram). FITC-conjugated donkey-anti-rabbit secondary Ab was used for the analysis.



#### Immunohistochemistry

**Image 3.** IHC analysis of FFPE human lymph tissue stained with NPM1 antibody

Please check the [product details page](#) for more images. Overall 6 images are available for ABIN3032075.