



[Go to Product page](#)

Datasheet for ABIN3032100
anti-SLC22A3 antibody (N-Term)

2 Images

Overview

Quantity:	100 µg
Target:	SLC22A3 (OCT3)
Binding Specificity:	N-Term
Reactivity:	Human, Mouse, Rat
Host:	Rabbit
Clonality:	Polyclonal
Conjugate:	This SLC22A3 antibody is un-conjugated
Application:	Western Blotting (WB)

Product Details

Immunogen:	An amino acid sequence from the N-terminus of human SLC22A3/OCT3 (EFGRFQRRVFLLLC) was used as the immunogen for this SLC22A3 antibody (100% homologous in human, mouse and rat).
Isotype:	IgG
Purification:	Antigen affinity

Target Details

Target:	SLC22A3 (OCT3)
Alternative Name:	SLC22A3 OCT3 (OCT3 Products)
Background:	Solute carrier family 22 (extraneuronal monoamine transporter) member 3, also known as OCT3, is a protein that in humans is encoded by the SLC22A3 gene. This gene is mapped to

Target Details

6q25.3. Polyspecific organic cation transporters in the liver, kidney, intestine, and other organs are critical for elimination of many endogenous small organic cations as well as a wide array of drugs and environmental toxins. This gene mediates potential-dependent transport of a variety of organic cations. It may play a significant role in the disposition of cationic neurotoxins and neurotransmitters in the brain.

UniProt: [O75751](#)

Application Details

Application Notes: The stated application concentrations are suggested starting amounts. Titration of the SLC22A3 antibody may be required due to differences in protocols and secondary/substrate sensitivity.\. Western blot: 0.5-1 µg/mL

Restrictions: For Research Use only

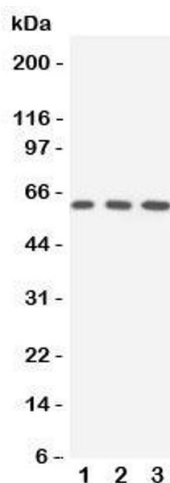
Handling

Buffer: 0.5 mg/mL if reconstituted with 0.2 mL sterile DI water

Storage: -20 °C

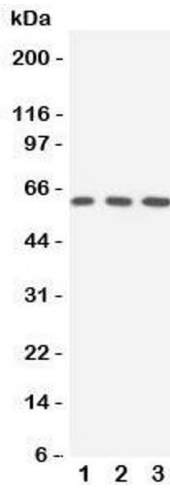
Storage Comment: After reconstitution, the SLC22A3 antibody can be stored for up to one month at 4°C. For long-term, aliquot and store at -20°C. Avoid repeated freezing and thawing.

Images



Western Blotting

Image 1. Western blot testing of SLC22A3 antibody and
Lane 1: rat liver



Western Blotting

Image 2. Western blot testing of SLC22A3 antibody and
Lane 1: rat liver; 2: human 293T; 3: (h) A549 cell lysate.
Expected/observed size ~61KD