

Datasheet for ABIN3032112
anti-NME2 antibody (AA 137-152)

6 Images

[Go to Product page](#)

Overview

Quantity:	100 µg
Target:	NME2
Binding Specificity:	AA 137-152
Reactivity:	Human, Mouse, Rat
Host:	Rabbit
Clonality:	Polyclonal
Conjugate:	This NME2 antibody is un-conjugated
Application:	Western Blotting (WB), Immunohistochemistry (Paraffin-embedded Sections) (IHC (p)), Immunocytochemistry (ICC)

Product Details

Immunogen:	Amino acids 137-152 (EELVDYKSCAHDWVYE-human) were used as the immunogen for this NME2 antibody.
Isotype:	IgG
Purification:	Antigen affinity

Target Details

Target:	NME2
Alternative Name:	NME2 (NME2 Products)
Background:	NME2 (NME/NM23 nucleoside diphosphate kinase 2) also called non-metastatic cells 2, protein (NM23B) expressed in, NM23-H2, NM23B or NDPKB, is identical to the beta subunit of human

Target Details

erythrocyte NDP kinase. Using Northern blot analysis, Masse et al.(2002) detected high expression of mouse NME2, which they called nm23-M2, in heart, liver, and kidney, with intermediate expression in skeletal muscle. In situ hybridization of 15-day postcoitum mouse embryos showed ubiquitous expression. The mouse and human genes contain 5 exons and span about 6.0 kb. The NME2 gene is mapped on 17q21.33. Srivastava et al.(2006) concluded that histidine phosphorylation regulates KCa3.1 channel activity and that NME2 is critical to the channel activity and the activation of CD4 T cells.

UniProt: [P22392](#)

Application Details

Application Notes: The stated application concentrations are suggested starting amounts. Titration of the NME2 antibody may be required due to differences in protocols and secondary/substrate sensitivity.\. Western blot: 0.5-1 µg/mL,IHC (Paraffin): 0.5-1 µg/mL,Immunocytochemistry: 0.5-1 µg/mL

Restrictions: For Research Use only

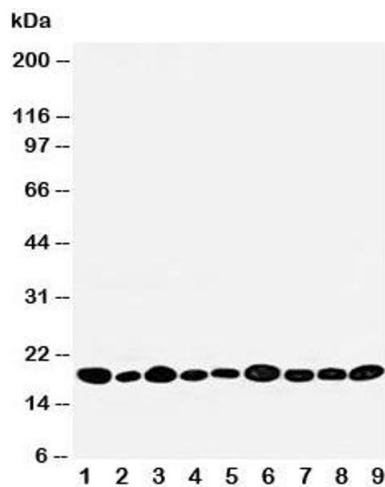
Handling

Buffer: 0.5 mg/mL if reconstituted with 0.2 mL sterile DI water

Storage: -20 °C

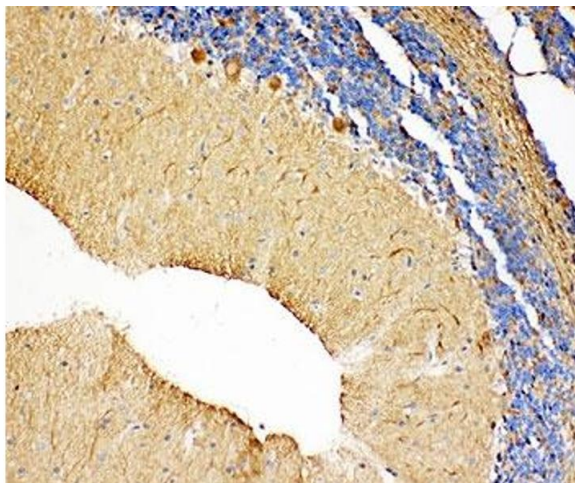
Storage Comment: After reconstitution, the NME2 antibody can be stored for up to one month at 4°C. For long-term, aliquot and store at -20°C. Avoid repeated freezing and thawing.

Images



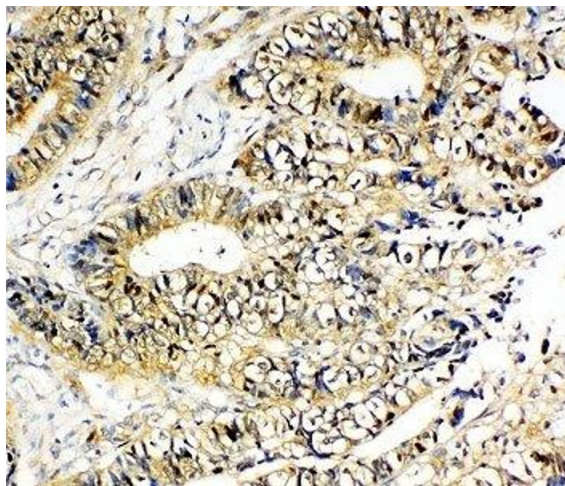
Western Blotting

Image 1. Western blot testing of NME2 antibody and rat samples 1: heart; 2: brain; 3: liver; 4: skeletal muscle; and human samples 5: PANC; 6: HeLa; 7: SMMC-7721; 8: U87; 9: COLO320 cell lysate. Predicted size ~17KD



Immunohistochemistry

Image 2. IHC-P: NME2 antibody testing of rat cerebellum tissue



Immunohistochemistry

Image 3. IHC-P: NME2 antibody testing of human intestinal cancer tissue

Please check the [product details page](#) for more images. Overall 6 images are available for ABIN3032112.