

Datasheet for ABIN3032117
anti-PAK2 antibody (AA 192-222)[Go to Product page](#)

3 Images

Overview

Quantity:	0.4 mL
Target:	PAK2
Binding Specificity:	AA 192-222
Reactivity:	Human
Host:	Rabbit
Clonality:	Polyclonal
Conjugate:	This PAK2 antibody is un-conjugated
Application:	Western Blotting (WB), ELISA, Immunohistochemistry (IHC)

Product Details

Immunogen:	A portion of amino acids 192-222 from the human protein was used as the immunogen for this PAK2 antibody.
Isotype:	Ig Fraction
Purification:	Purified

Target Details

Target:	PAK2
Alternative Name:	PAK2 (PAK2 Products)
Background:	PAK2, a member of the STE20 subfamily of Ser/Thr protein kinases, acts on a variety of targets. It phosphorylates ribosomal protein S6, histone H4 and myelin basic protein. PAK2 interacts tightly with GTP-bound but not GDP-bound CDC42/p21 and RAC1. Expression is ubiquitous,

Target Details

with higher levels seen in skeletal muscle, ovary, thymus and spleen. PAK2 is autophosphorylated when activated by CDC42/p21. The protein structure contains 1 CRIB domain.

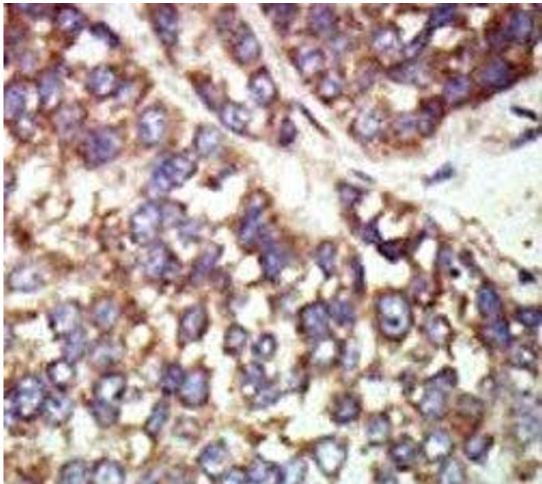
UniProt:	Q13177
Pathways:	MAPK Signaling , RTK Signaling , TCR Signaling , Fc-epsilon Receptor Signaling Pathway , Regulation of Lipid Metabolism by PPARalpha

Application Details

Application Notes:	Titration of the PAK2 antibody may be required due to differences in protocols and secondary/substrate sensitivity.\. Western blot: 1:1000,IHC (Paraffin): 1:50-1:100
Restrictions:	For Research Use only

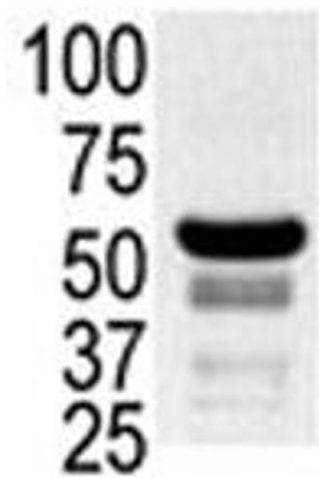
Handling

Format:	Liquid
Buffer:	In 1X PBS, pH 7.4, with 0.09 % sodium azide
Preservative:	Sodium azide
Precaution of Use:	This product contains Sodium azide: a POISONOUS AND HAZARDOUS SUBSTANCE which should be handled by trained staff only.
Storage:	-20 °C
Storage Comment:	Aliquot the PAK2 antibody and store frozen at -20°C or colder. Avoid repeated freeze-thaw cycles.



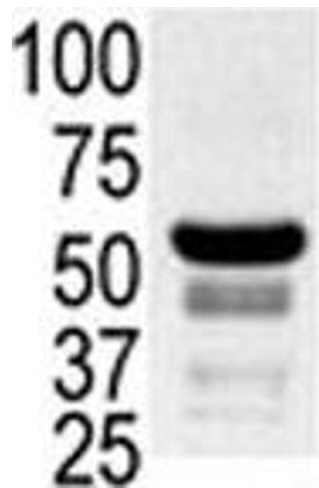
Immunohistochemistry

Image 1. IHC analysis of FFPE human hepatocarcinoma tissue stained with the PAK2 antibody



Western Blotting

Image 2. Western blot testing of ovary lysate with PAK2 antibody.



Western Blotting

Image 3. Western blot testing of ovary lysate with PAK2 antibody.