



[Go to Product page](#)

Datasheet for ABIN3032122
anti-PAK6 antibody (AA 116-146)

2 Images

Overview

Quantity:	0.4 mL
Target:	PAK6
Binding Specificity:	AA 116-146
Reactivity:	Human
Host:	Rabbit
Clonality:	Polyclonal
Conjugate:	This PAK6 antibody is un-conjugated
Application:	Western Blotting (WB), ELISA

Product Details

Immunogen:	A portion of amino acids 116-146 from the human protein was used as the immunogen for this PAK6 antibody.
Isotype:	Ig Fraction
Purification:	Purified

Target Details

Target:	PAK6
Alternative Name:	PAK6 (PAK6 Products)
Background:	The PAK6 protein shares a high degree of sequence similarity with p21-activated kinase (PAK) family members. The proteins of this family are Rac/Cdc42-associated Ste20-like Ser/Thr protein kinases, characterized by a highly conserved amino-terminal Cdc42/Rac interactive

Target Details

binding (CRIB) domain and a carboxyl-terminal kinase domain. PAK kinases are implicated in the regulation of a number of cellular processes, including cytoskeleton rearrangement, apoptosis and the MAP kinase signaling pathway. PAK6 was found to interact with androgen receptor (AR), which is a steroid hormone-dependent transcription factor that is important for male sexual differentiation and development. The p21-activated protein kinase 6 gene was found to be highly expressed in testis and prostate tissues and the encoded protein was shown to cotranslocate into the nucleus with AR in response to androgen.

UniProt: [Q9NQU5](#)

Application Details

Application Notes: Titration of the PAK6 antibody may be required due to differences in protocols and secondary/substrate sensitivity.\. Western blot: 1:1000

Restrictions: For Research Use only

Handling

Format: Liquid

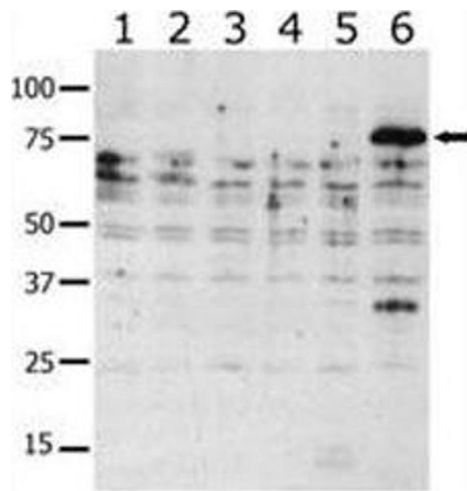
Buffer: In 1X PBS, pH 7.4, with 0.09 % sodium azide

Preservative: Sodium azide

Precaution of Use: This product contains Sodium azide: a POISONOUS AND HAZARDOUS SUBSTANCE which should be handled by trained staff only.

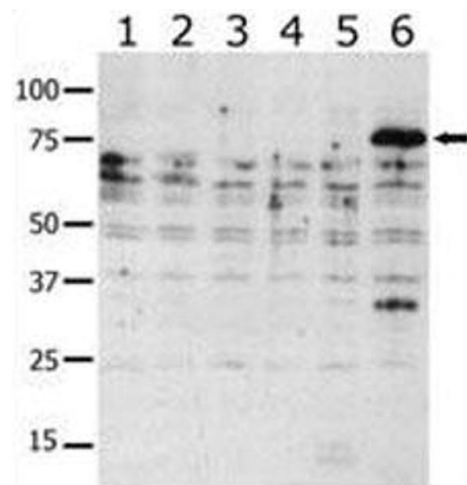
Storage: -20 °C

Storage Comment: Aliquot the PAK6 antibody and store frozen at -20°C or colder. Avoid repeated freeze-thaw cycles.



Western Blotting

Image 1. Western blot analysis of PAK6 antibody in lysate from transiently transfected COS7 cells. Lane 1: negative control, 2: PAK1, 3: PAK2, 4: PAK4, 5: PAK5, and 6: PAK6-expressing cells.



Western Blotting

Image 2. Western blot analysis of PAK6 antibody in lysate from transiently transfected COS7 cells. Lane 1: negative control, 2: PAK1, 3: PAK2, 4: PAK4, 5: PAK5, and 6: PAK6-expressing cells.