

Datasheet for ABIN3032125
anti-PAX4 antibody (AA 171-200)[Go to Product page](#)

7 Images

Overview

Quantity:	0.4 mL
Target:	PAX4
Binding Specificity:	AA 171-200
Reactivity:	Human, Rat
Host:	Rabbit
Clonality:	Polyclonal
Conjugate:	This PAX4 antibody is un-conjugated
Application:	Western Blotting (WB), ELISA, Immunohistochemistry (IHC), Flow Cytometry (FACS)

Product Details

Immunogen:	A portion of amino acids 171-200 from the human protein was used as the immunogen for this PAX4 antibody.
Isotype:	Ig Fraction
Cross-Reactivity (Details):	Expected species reactivity: Mouse
Purification:	Purified

Target Details

Target:	PAX4
Alternative Name:	PAX4 (PAX4 Products)
Background:	PAX4 is a member of the paired box (PAX) family of transcription factors. These proteins play

Target Details

critical roles during fetal development and cancer growth. The paired box 4 gene is involved in pancreatic islet development and mouse studies have demonstrated a role for this gene in differentiation of insulin-producing beta cells.

UniProt: [O43316](#)

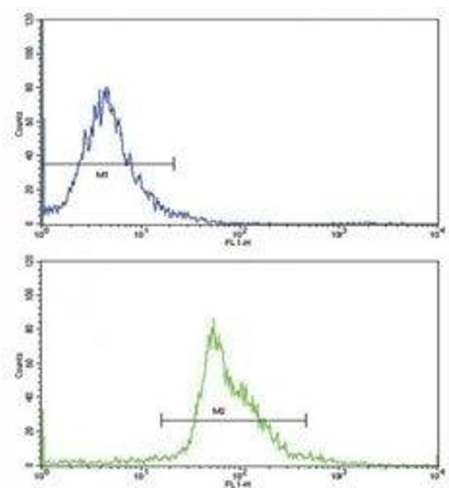
Application Details

Application Notes:	Titration of the PAX4 antibody may be required due to differences in protocols and secondary/substrate sensitivity.\. Western blot: 1:1000-2000,IHC (Paraffin): 1:10-1:50,Flow Cytometry: 1:10-1:50
Restrictions:	For Research Use only

Handling

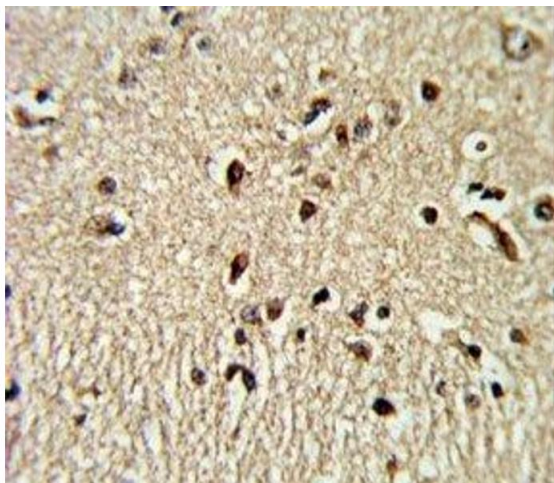
Format:	Liquid
Buffer:	In 1X PBS, pH 7.4, with 0.09 % sodium azide
Preservative:	Sodium azide
Precaution of Use:	This product contains Sodium azide: a POISONOUS AND HAZARDOUS SUBSTANCE which should be handled by trained staff only.
Storage:	-20 °C
Storage Comment:	Aliquot the PAX4 antibody and store frozen at -20°C or colder. Avoid repeated freeze-thaw cycles.

Images



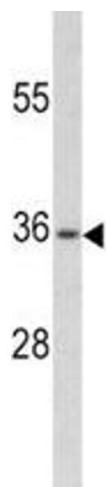
Flow Cytometry

Image 1. Flow cytometric analysis of WiDr cells using PAX4 antibody (bottom histogram) compared to a negative control (top histogram)



Immunohistochemistry

Image 2. IHC analysis of FFPE human brain tissue stained with PAX4 antibody



Western Blotting

Image 3. Western blot analysis of PAX4 antibody and CEM lysate

Please check the [product details page](#) for more images. Overall 7 images are available for ABIN3032125.