

Datasheet for ABIN3032127
anti-PAX6 antibody (AA 352-380)[Go to Product page](#)

7 Images

Overview

Quantity:	0.4 mL
Target:	PAX6
Binding Specificity:	AA 352-380
Reactivity:	Human
Host:	Rabbit
Clonality:	Polyclonal
Conjugate:	This PAX6 antibody is un-conjugated
Application:	Western Blotting (WB), Immunofluorescence (IF), ELISA, Immunohistochemistry (IHC)

Product Details

Immunogen:	A portion of amino acids 352-380 from the human protein was used as the immunogen for this PAX-6 antibody.
Isotype:	Ig Fraction
Purification:	Antigen affinity purified

Target Details

Target:	PAX6
Alternative Name:	PAX-6 (PAX6 Products)
Background:	Transcription factor with important functions in the development of the eye, nose, central nervous system and pancreas. Required for the differentiation of pancreatic islet alpha cells (By similarity). Competes with PAX4 in binding to a common element in the glucagon, insulin and

Target Details

somatostatin promoters. Regulates specification of the ventral neuron subtypes by establishing the correct progenitor domains (By similarity). [UniProt]

UniProt: [P26367](#)

Pathways: [Peptide Hormone Metabolism](#), [Carbohydrate Homeostasis](#)

Application Details

Application Notes: Titration of the PAX-6 antibody may be required due to differences in protocols and secondary/substrate sensitivity.\. Western blot: 1:1000,IHC (Paraffin): 1:10-1:50,Immunofluorescence: 1:10-1:50

Restrictions: For Research Use only

Handling

Format: Liquid

Buffer: In 1X PBS, pH 7.4, with 0.09 % sodium azide

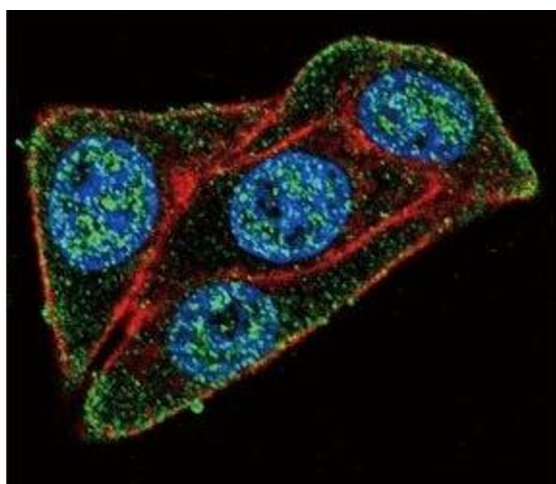
Preservative: Sodium azide

Precaution of Use: This product contains Sodium azide: a POISONOUS AND HAZARDOUS SUBSTANCE which should be handled by trained staff only.

Storage: -20 °C

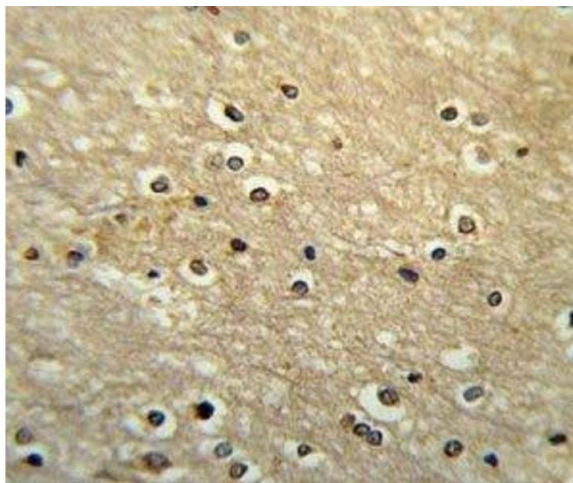
Storage Comment: Aliquot the PAX-6 antibody and store frozen at -20°C or colder. Avoid repeated freeze-thaw cycles.

Images



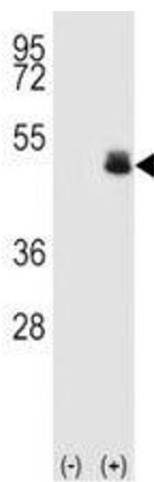
Immunofluorescence

Image 1. Confocal immunofluorescent analysis of PAX-6 antibody with HeLa cells followed by Alexa Fluor 488-conjugated goat anti-rabbit IgG (green). Actin filaments have been labeled with Alexa Fluor 555 Phalloidin (red). DAPI was used as a nuclear counterstain (bl



Immunohistochemistry

Image 2. PAX-6 antibody immunohistochemistry analysis in formalin fixed and paraffin embedded human brain tissue



Western Blotting

Image 3. Western blot analysis of PAX-6 antibody and 293 cell lysate (2 ug/lane) either nontransfected (Lane 1) or transiently transfected (2) with the human gene.

Please check the [product details page](#) for more images. Overall 7 images are available for ABIN3032127.