

Datasheet for ABIN3032129
anti-PAX6 antibody (AA 183-210)

7 Images

[Go to Product page](#)

Overview

| | |
|----------------------|---|
| Quantity: | 0.4 mL |
| Target: | PAX6 |
| Binding Specificity: | AA 183-210 |
| Reactivity: | Human |
| Host: | Rabbit |
| Clonality: | Polyclonal |
| Conjugate: | This PAX6 antibody is un-conjugated |
| Application: | Western Blotting (WB), Immunofluorescence (IF), ELISA, Flow Cytometry (FACS), Immunohistochemistry (IHC) |

Product Details

| | |
|-----------------------------|---|
| Immunogen: | A portion of amino acids 183-210 from the human protein was used as the immunogen for this PAX6 antibody. |
| Isotype: | Ig Fraction |
| Cross-Reactivity (Details): | Expected species reactivity: Mouse, Rat, Bovine, Xenopus |
| Purification: | Antigen affinity purified |

Target Details

| | |
|-------------------|--|
| Target: | PAX6 |
| Alternative Name: | PAX6 (PAX6 Products) |

Target Details

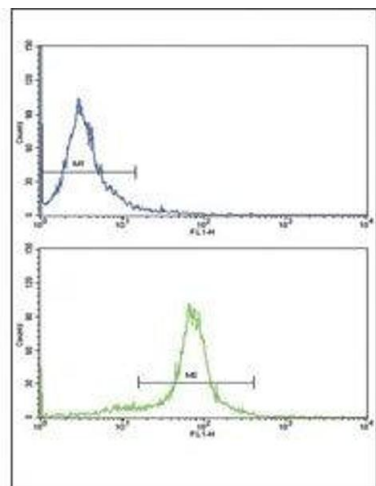
| | |
|-------------|--|
| Background: | PAX6 is paired box gene 6, one of many human homologs of the Drosophila melanogaster gene <i>prd</i> . In addition to the hallmark feature of this gene family, a conserved paired box domain, the encoded protein also contains a homeo box domain. Both domains are known to bind DNA, and function as regulators of gene transcription. |
| UniProt: | P26367 |
| Pathways: | Peptide Hormone Metabolism , Carbohydrate Homeostasis |

Application Details

| | |
|--------------------|---|
| Application Notes: | The stated application concentrations are suggested starting amounts. Titration of the PAX6 antibody may be required due to differences in protocols and secondary/substrate sensitivity.\. Western blot: 1:1000,IHC (Paraffin): 1:10-1:50,Immunofluorescence: 1:10-1:50,Flow Cytometry: 1:10-1:50 |
| Restrictions: | For Research Use only |

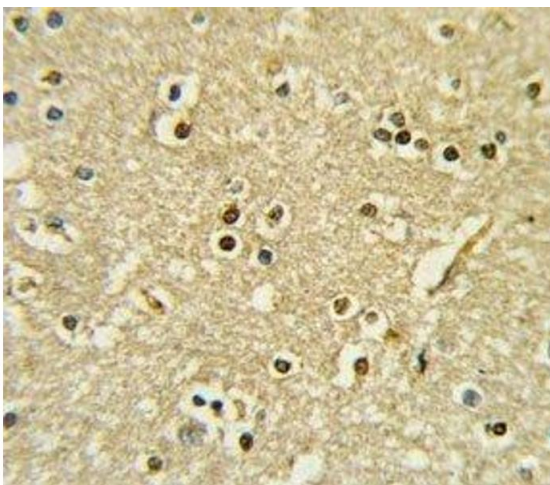
Handling

| | |
|--------------------|--|
| Format: | Liquid |
| Buffer: | In 1X PBS, pH 7.4, with 0.09 % sodium azide |
| Preservative: | Sodium azide |
| Precaution of Use: | This product contains Sodium azide: a POISONOUS AND HAZARDOUS SUBSTANCE which should be handled by trained staff only. |
| Storage: | -20 °C |
| Storage Comment: | Store at 4°C for up to one month. For long term, aliquot the PAX6 antibody and store frozen at -20°C or colder. Avoid repeated freeze-thaw cycles. |



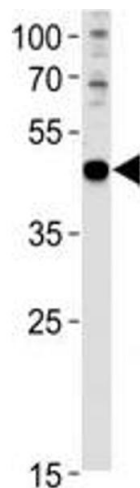
Flow Cytometry

Image 1. Flow cytometric analysis of HeLa cells using PAX6 antibody (bottom histogram) compared to a negative control (top histogram).



Immunohistochemistry

Image 2. IHC analysis of FFPE human brain tissue stained with PAX6 antibody



Western Blotting

Image 3. PAX6 antibody western blot analysis in U251 lysate

Please check the [product details page](#) for more images. Overall 7 images are available for ABIN3032129.