

Datasheet for ABIN3032135
anti-PAX7 antibody (AA 181-210)



[Go to Product page](#)

3 Images

Overview

Quantity:	0.4 mL
Target:	PAX7
Binding Specificity:	AA 181-210
Reactivity:	Human
Host:	Rabbit
Clonality:	Polyclonal
Conjugate:	This PAX7 antibody is un-conjugated
Application:	Western Blotting (WB), Immunohistochemistry (IHC), ELISA

Product Details

Immunogen:	A portion of amino acids 181-210 from the human protein was used as the immunogen for this PAX7 antibody.
Isotype:	Ig Fraction
Cross-Reactivity (Details):	Expected species reactivity: Mouse
Purification:	Antigen affinity purified

Target Details

Target:	PAX7
Alternative Name:	PAX7 (PAX7 Products)
Background:	This gene is a member of the paired box (PAX) family of transcription factors. Members of this

Target Details

gene family typically contain a paired box domain, an octapeptide, and a paired-type homeodomain. These genes play critical roles during fetal development and cancer growth. The specific function of the paired box 7 gene is unknown but speculated to involve tumor suppression since fusion of this gene with a forkhead domain family member has been associated with alveolar rhabdomyosarcoma. Three transcript variants encoding different isoforms have been found for this gene.

UniProt: [P23759](#)

Application Details

Application Notes: Titration of the PAX7 antibody may be required due to differences in protocols and secondary/substrate sensitivity.\. Western blot: 1:1000,IHC (Paraffin): 1:10-1:50

Restrictions: For Research Use only

Handling

Format: Liquid

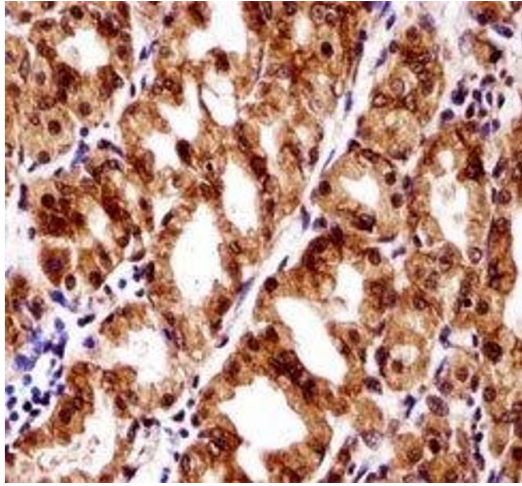
Buffer: In 1X PBS, pH 7.4, with 0.09 % sodium azide

Preservative: Sodium azide

Precaution of Use: This product contains Sodium azide: a POISONOUS AND HAZARDOUS SUBSTANCE which should be handled by trained staff only.

Storage: -20 °C

Storage Comment: Aliquot the PAX7 antibody and store frozen at -20°C or colder. Avoid repeated freeze-thaw cycles.



Immunohistochemistry

Image 1. PAX7 antibody immunohistochemistry analysis in formalin fixed and paraffin embedded human stomach tissue



Western Blotting

Image 2. PAX7 antibody western blot analysis in CEM lysate



Western Blotting

Image 3. PAX7 antibody western blot analysis in CEM lysate