

Datasheet for ABIN3032136
anti-PAX8 antibody (AA 285-313)[Go to Product page](#)

5 Images

Overview

Quantity:	0.4 mL
Target:	PAX8
Binding Specificity:	AA 285-313
Reactivity:	Human
Host:	Rabbit
Clonality:	Polyclonal
Conjugate:	This PAX8 antibody is un-conjugated
Application:	Western Blotting (WB), Immunohistochemistry (IHC), ELISA, Flow Cytometry (FACS)

Product Details

Immunogen:	A portion of amino acids 285-313 from the human protein was used as the immunogen for this PAX8 antibody.
Isotype:	Ig Fraction
Cross-Reactivity (Details):	Expected species reactivity: Mouse
Purification:	Antigen affinity purified

Target Details

Target:	PAX8
Alternative Name:	PAX8 (PAX8 Products)
Background:	PAX8 is a member of the paired box (PAX) family of transcription factors. Members of this

Target Details

family contain a paired box domain, an octapeptide, and a paired-type homeodomain. This nuclear protein is involved in thyroid follicular cell development and expression of thyroid-specific genes.

UniProt: [Q06710](#)

Pathways: [Thyroid Hormone Synthesis](#), [Regulation of Hormone Metabolic Process](#), [Stem Cell Maintenance](#), [Tube Formation](#)

Application Details

Application Notes: Titration of the PAX8 antibody may be required due to differences in protocols and secondary/substrate sensitivity.\. Western blot: 1:1000,IHC (Paraffin): 1:10-1:50,Flow Cytometry: 1:10-1:50

Restrictions: For Research Use only

Handling

Format: Liquid

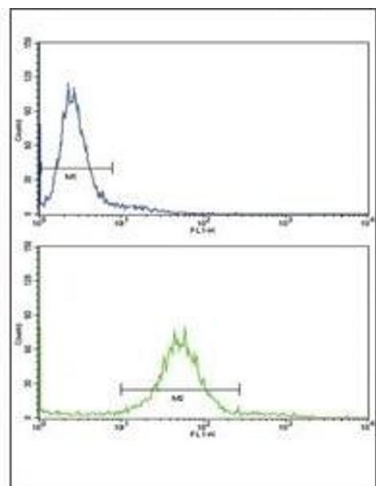
Buffer: In 1X PBS, pH 7.4, with 0.09 % sodium azide

Preservative: Sodium azide

Precaution of Use: This product contains Sodium azide: a POISONOUS AND HAZARDOUS SUBSTANCE which should be handled by trained staff only.

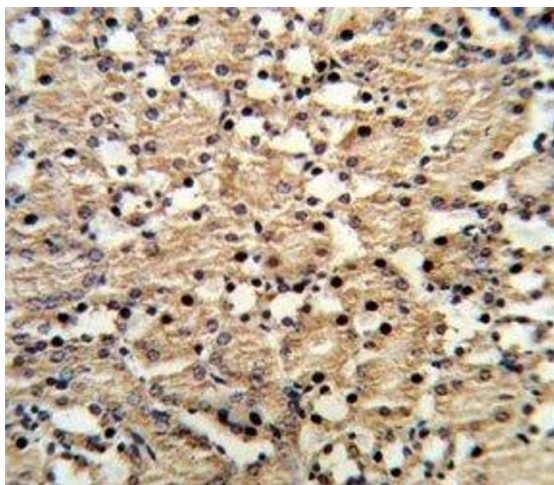
Storage: -20 °C

Storage Comment: Aliquot the PAX8 antibody and store frozen at -20°C or colder. Avoid repeated freeze-thaw cycles.



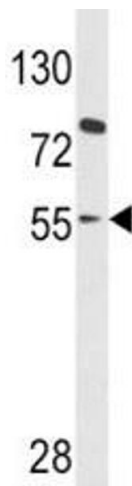
Flow Cytometry

Image 1. Flow cytometric analysis of 293 cells using PAX8 antibody (bottom histogram) compared to a negative control (top histogram). FITC-conjugated goat-anti-rabbit secondary Ab was used for the analysis.



Immunohistochemistry

Image 2. IHC analysis of FFPE mouse kidney stained with PAX8 antibody



Western Blotting

Image 3. Western blot analysis of PAX8 antibody and HL-60 lysate

Please check the [product details page](#) for more images. Overall 5 images are available for ABIN3032136.