



[Go to Product page](#)

Datasheet for ABIN3032138  
**anti-PHOX2B antibody (AA 104-130)**

3 Images

Overview

Quantity:	0.4 mL
Target:	PHOX2B
Binding Specificity:	AA 104-130
Reactivity:	Mouse
Host:	Rabbit
Clonality:	Polyclonal
Conjugate:	This PHOX2B antibody is un-conjugated
Application:	Western Blotting (WB), ELISA, Immunofluorescence (IF)

Product Details

Immunogen:	A portion of amino acids 104-130 from the human protein was used as the immunogen for this PHOX2B antibody.
Isotype:	Ig Fraction
Cross-Reactivity (Details):	Expected species reactivity: Human, Rat
Purification:	Antigen affinity purified

Target Details

Target:	PHOX2B
Alternative Name:	PHOX2B ( <a href="#">PHOX2B Products</a> )
Background:	The DNA-associated protein encoded by this gene is a member of the paired family of

## Target Details

---

homeobox proteins localized to the nucleus. The protein functions as a transcription factor involved in the development of several major noradrenergic neuron populations and the determination of neurotransmitter phenotype. The gene product is linked to enhancement of second messenger-mediated activation of the dopamine beta-hydroxylase, c-fos promoters and several enhancers, including cyclic amp-response element and serum-response element. [provided by RefSeq].

UniProt: [Q99453](#)

## Application Details

---

Application Notes: Titration of the PHOX2B antibody may be required due to differences in protocols and secondary/substrate sensitivity.\. Immunofluorescence: 1:10-1:50,Western blot: 1:1000

Restrictions: For Research Use only

## Handling

---

Format: Liquid

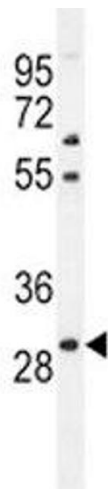
Buffer: In 1X PBS, pH 7.4, with 0.09 % sodium azide

Preservative: Sodium azide

Precaution of Use: This product contains Sodium azide: a POISONOUS AND HAZARDOUS SUBSTANCE which should be handled by trained staff only.

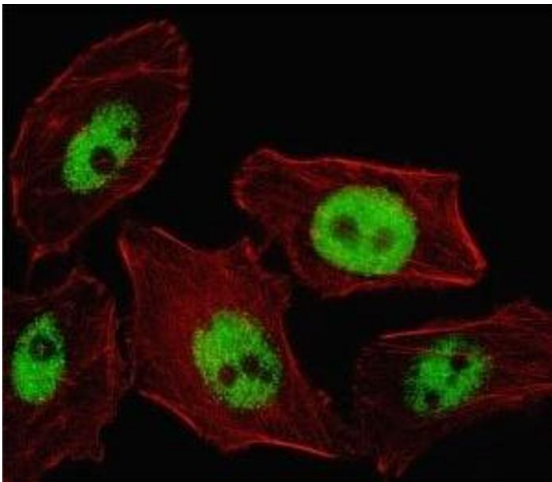
Storage: -20 °C

Storage Comment: Aliquot the PHOX2B antibody and store frozen at -20°C or colder. Avoid repeated freeze-thaw cycles.



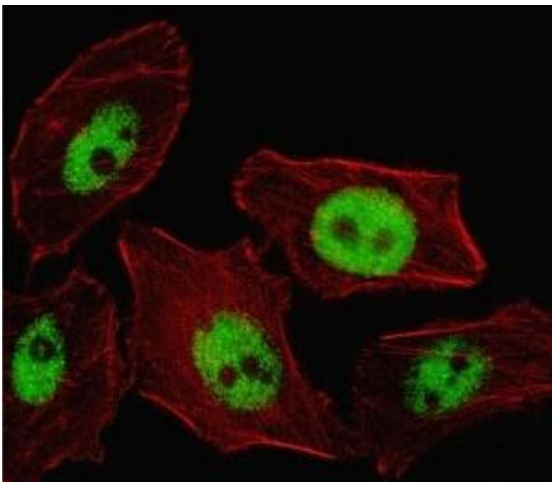
### Western Blotting

**Image 1.** PHOX2B antibody western blot analysis in mouse liver tissue lysate



### Immunofluorescence

**Image 2.** Fluorescent image of U251 cell stained with PHOX2B antibody. Alexa Fluor 488 conjugated secondary (green) was used. Cytoplasmic actin was counterstained with Alexa Fluor 555 (red) conjugated Phalloidin. PHOX2B immunoreactivity is localized to the nucleus.



### Immunofluorescence

**Image 3.** Fluorescent image of U251 cell stained with PHOX2B antibody. Alexa Fluor 488 conjugated secondary (green) was used. Cytoplasmic actin was counterstained with Alexa Fluor 555 (red) conjugated Phalloidin. PHOX2B immunoreactivity is localized to the nucleus.