

Datasheet for ABIN3032139  
**anti-PITX1 antibody (AA 123-150)**

## 6 Images

[Go to Product page](#)

## Overview

Quantity:	0.4 mL
Target:	PITX1
Binding Specificity:	AA 123-150
Reactivity:	Human
Host:	Rabbit
Clonality:	Polyclonal
Conjugate:	This PITX1 antibody is un-conjugated
Application:	Western Blotting (WB), ELISA, Immunohistochemistry (IHC), Flow Cytometry (FACS)

## Product Details

Immunogen:	A portion of amino acids 123-150 from the human protein was used as the immunogen for this PITX1 antibody.
Isotype:	Ig Fraction
Cross-Reactivity (Details):	Expected species reactivity: Mouse, Rat, Chicken, Zebrafish, Xenopus, Drosophila, C. elegans
Purification:	Purified

## Target Details

Target:	PITX1
Alternative Name:	PITX1 ( <a href="#">PITX1 Products</a> )
Background:	PITX1 is a member of the RIEG/PITX homeobox family, which is in the bicoid class of

## Target Details

homeodomain proteins. Members of this family are involved in organ development and left-right asymmetry. This protein acts as a transcriptional regulator involved in basal and hormone-regulated activity of prolactin.

UniProt: [P78337](#)

## Application Details

Application Notes: Titration of the PITX1 antibody may be required due to differences in protocols and secondary/substrate sensitivity.\. Western blot: 1:1000,IHC (Paraffin): 1:50-1:100,Flow Cytometry: 1:10-1:50

Restrictions: For Research Use only

## Handling

Format: Liquid

Buffer: In 1X PBS, pH 7.4, with 0.09 % sodium azide

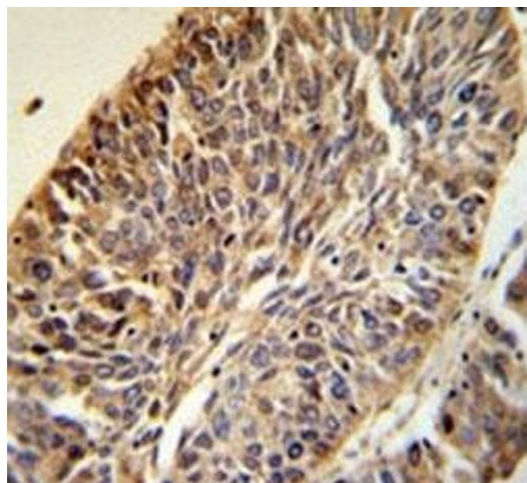
Preservative: Sodium azide

Precaution of Use: This product contains Sodium azide: a POISONOUS AND HAZARDOUS SUBSTANCE which should be handled by trained staff only.

Storage: -20 °C

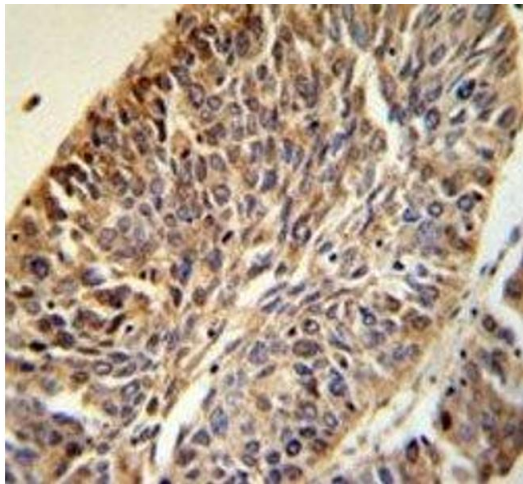
Storage Comment: Aliquot the PITX1 antibody and store frozen at -20°C or colder. Avoid repeated freeze-thaw cycles.

## Images



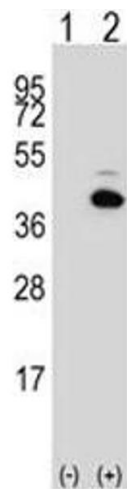
### Immunohistochemistry

**Image 1.** PITX1 antibody IHC analysis in formalin fixed and paraffin embedded human lung carcinoma.



#### Immunohistochemistry

**Image 2.** PITX1 antibody IHC analysis in formalin fixed and paraffin embedded human lung carcinoma.



#### Western Blotting

**Image 3.** Western blot analysis of PITX1 antibody and 293 cell lysate either nontransfected (Lane 1) or transiently transfected (2) with the PITX1 gene. Predicted molecular weight ~34 kDa.

Please check the [product details page](#) for more images. Overall 6 images are available for ABIN3032139.