

Datasheet for ABIN3032145
anti-PDX1 antibody (AA 40-69)[Go to Product page](#)

3 Images

Overview

Quantity:	0.4 mL
Target:	PDX1
Binding Specificity:	AA 40-69
Reactivity:	Human
Host:	Rabbit
Clonality:	Polyclonal
Conjugate:	This PDX1 antibody is un-conjugated
Application:	Western Blotting (WB), ELISA, Immunohistochemistry (IHC)

Product Details

Immunogen:	A portion of amino acids 40-69 from the human protein was used as the immunogen for this PDX1 antibody.
Isotype:	Ig Fraction
Purification:	Antigen affinity purified

Target Details

Target:	PDX1
Alternative Name:	PDX1 (PDX1 Products)
Background:	PDX1 is a transcriptional activator of several genes, including insulin, somatostatin, glucokinase, islet amyloid polypeptide, and glucose transporter type 2. This nuclear protein is involved in the early development of the pancreas and plays a major role in glucose-dependent

Target Details

regulation of insulin gene expression. Defects in the gene encoding PDX1 are a cause of pancreatic agenesis, which can lead to early-onset insulin-dependent diabetes mellitus (NIDDM), as well as maturity onset diabetes of the young type 4 (MODY4).

UniProt: [P52945](#)

Pathways: [Nuclear Receptor Transcription Pathway](#), [Positive Regulation of Peptide Hormone Secretion](#), [Steroid Hormone Mediated Signaling Pathway](#), [Hormone Transport](#), [Carbohydrate Homeostasis](#), [Chromatin Binding](#), [Maintenance of Protein Location](#)

Application Details

Application Notes: Titration of the PDX1 antibody may be required due to differences in protocols and secondary/substrate sensitivity.\. Western blot: 1:1000,IHC (Paraffin): 1:10-1:50

Restrictions: For Research Use only

Handling

Format: Liquid

Buffer: In 1X PBS, pH 7.4, with 0.09 % sodium azide

Preservative: Sodium azide

Precaution of Use: This product contains Sodium azide: a POISONOUS AND HAZARDOUS SUBSTANCE which should be handled by trained staff only.

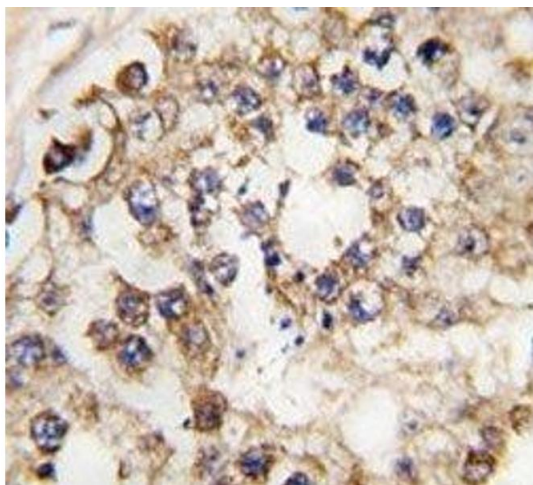
Storage: -20 °C

Storage Comment: Aliquot the PDX1 antibody and store frozen at -20°C or colder. Avoid repeated freeze-thaw cycles.



Western Blotting

Image 1. Western blot analysis of PDX1 antibody and 293 cell lysate either nontransfected (Lane 1) or transiently transfected with the PDX1 gene (2).



Immunohistochemistry

Image 2. IHC analysis of FFPE human testis tissue stained with PDX1 antibody



Western Blotting

Image 3. Western blot analysis of PDX1 antibody and 293 cell lysate either nontransfected (Lane 1) or transiently transfected with the PDX1 gene (2).