

Datasheet for ABIN3032148
anti-PDX1 antibody (pThr11)

3 Images

[Go to Product page](#)

Overview

Quantity:	0.4 mL
Target:	PDX1
Binding Specificity:	pThr11
Reactivity:	Human
Host:	Rabbit
Clonality:	Polyclonal
Conjugate:	This PDX1 antibody is un-conjugated
Application:	ELISA, Dot Blot (DB), Immunofluorescence (IF)

Product Details

Immunogen:	This phospho-PDX1 antibody was produced from rabbits immunized with a KLH conjugated synthetic phosphopeptide corresponding to amino acid residues surrounding pT11 of human PDX1.
Isotype:	Ig Fraction
Cross-Reactivity (Details):	Expected species reactivity: Mouse, Rat
Purification:	Antigen affinity purified

Target Details

Target:	PDX1
Alternative Name:	PDX1 (PDX1 Products)

Target Details

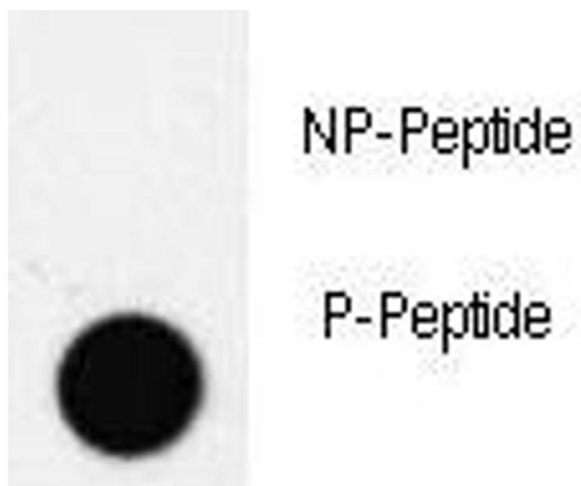
Background:	PDX1 is a transcriptional activator of several genes, including insulin, somatostatin, glucokinase, islet amyloid polypeptide, and glucose transporter type 2. The encoded nuclear protein is involved in the early development of the pancreas and plays a major role in glucose-dependent regulation of insulin gene expression. Defects in this protein are a cause of pancreatic agenesis, which can lead to early-onset insulin-dependent diabetes mellitus (NIDDM), as well as maturity onset diabetes of the young type 4 (MODY4).
UniProt:	P52945
Pathways:	Nuclear Receptor Transcription Pathway , Positive Regulation of Peptide Hormone Secretion , Steroid Hormone Mediated Signaling Pathway , Hormone Transport , Carbohydrate Homeostasis , Chromatin Binding , Maintenance of Protein Location

Application Details

Application Notes:	Titration of the phospho-PDX1 antibody may be required due to differences in protocols and secondary/substrate sensitivity.\. Immunofluorescence: 1:100, Dot blot: 1:500
Restrictions:	For Research Use only

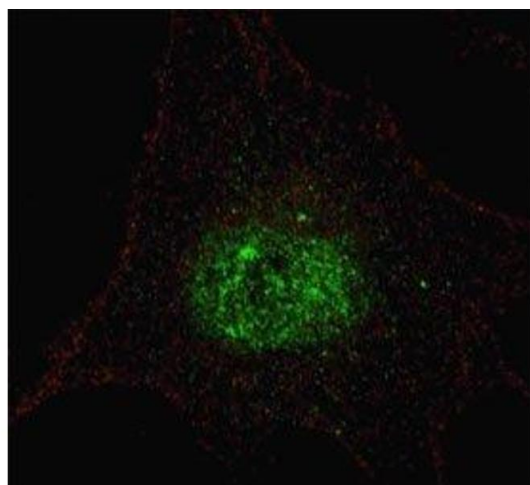
Handling

Format:	Liquid
Buffer:	In 1X PBS, pH 7.4, with 0.09 % sodium azide
Preservative:	Sodium azide
Precaution of Use:	This product contains Sodium azide: a POISONOUS AND HAZARDOUS SUBSTANCE which should be handled by trained staff only.
Storage:	-20 °C
Storage Comment:	Aliquot the phospho-PDX1 antibody and store frozen at -20°C or colder. Avoid repeated freeze-thaw cycles.



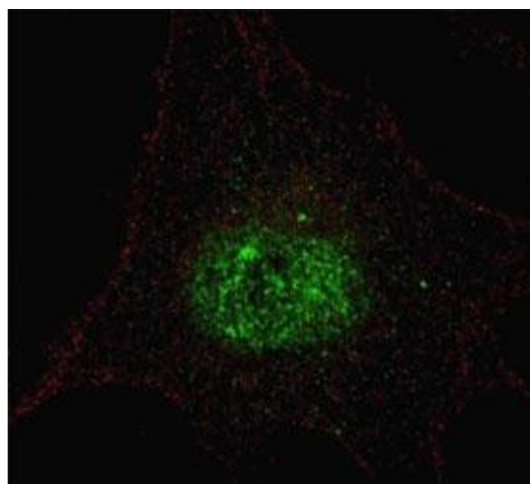
Dot Blot

Image 1. Dot blot analysis of phospho-PDX1 antibody. 50ng of phos-peptide or nonphos-peptide per dot were spotted.



Immunofluorescence

Image 2. Fluorescent confocal image of SY5Y cells stained with phospho-PDX1 antibody. Alexa Fluor 488 conjugated secondary (green) was used. Note the highly specific localization of the immunosignal to the nucleus.



Immunofluorescence

Image 3. Fluorescent confocal image of SY5Y cells stained with phospho-PDX1 antibody. Alexa Fluor 488 conjugated secondary (green) was used. Note the highly specific localization of the immunosignal to the nucleus.