



[Go to Product page](#)

Datasheet for ABIN3032152
anti-PTH1R antibody (C-Term)

3 Images

Overview

Quantity:	100 µg
Target:	PTH1R
Binding Specificity:	C-Term
Reactivity:	Human, Rat, Mouse
Host:	Rabbit
Clonality:	Polyclonal
Conjugate:	This PTH1R antibody is un-conjugated
Application:	Western Blotting (WB), Immunohistochemistry (Paraffin-embedded Sections) (IHC (p)), Immunocytochemistry (ICC)

Product Details

Immunogen:	An amino acid sequence from the C-terminus of human Parathyroid Hormone Receptor 1 (KLRETNAGRCDTRQQYRKL) was used as the immunogen for this PTH1R antibody (100% homologous in human, mouse and rat).
Isotype:	IgG
Purification:	Antigen affinity

Target Details

Target:	PTH1R
Alternative Name:	PTH1R (PTH1R Products)
Background:	Parathyroid hormone/parathyroid hormone-related peptide receptor, also known as PTHR, is a

Target Details

protein that in humans is encoded by the PTH1R gene. PTHR is a member of a family of G protein-coupled receptors. PTHR gene was mapped to the vicinity of the 3p21.3-p21.2 boundary by PCR analysis of human/rodent somatic cell hybrid panels using oligonucleotide primers designed to amplify a portion of the gene from genomic DNA. This is a receptor for parathyroid hormone and for parathyroid hormone-related peptide. The activity of this receptor is mediated by G proteins which activate adenylyl cyclase and also a phosphatidylinositol-calcium second messenger system. PTH1R functions as a receptor for parathyroid hormone and for parathyroid hormone-related protein.

UniProt: [Q03431](#)

Pathways: [Regulation of Carbohydrate Metabolic Process](#)

Application Details

Application Notes: The stated application concentrations are suggested starting amounts. Titration of the PTH1R antibody may be required due to differences in protocols and secondary/substrate sensitivity.\. Western blot: 0.5-1 µg/mL,IHC (Paraffin): 0.5-1 µg/mL,Immunocytochemistry: 0.5-1 µg/mL

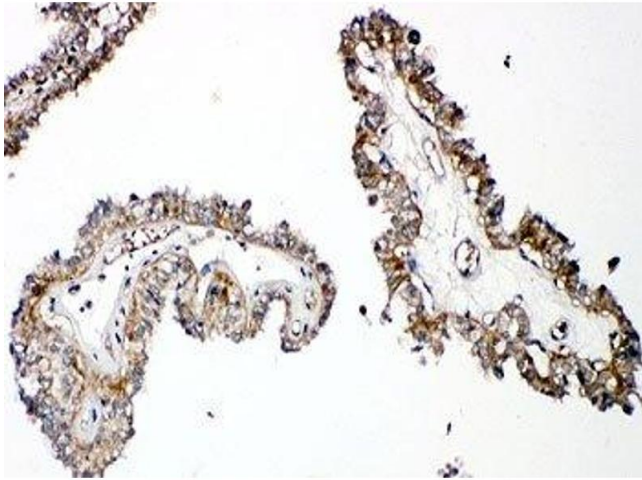
Restrictions: For Research Use only

Handling

Buffer: 0.5 mg/mL if reconstituted with 0.2 mL sterile DI water

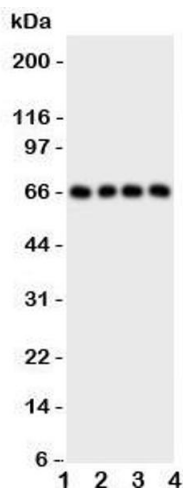
Storage: -20 °C

Storage Comment: After reconstitution, the PTH1R antibody can be stored for up to one month at 4°C. For long-term, aliquot and store at -20°C. Avoid repeated freezing and thawing.



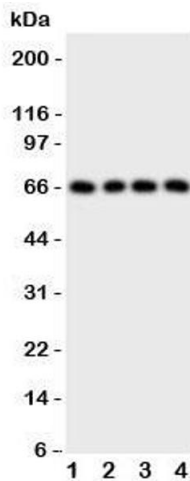
Immunohistochemistry

Image 1. IHC-P: PTH1R antibody testing of human thyroid cancer tissue



Western Blotting

Image 2. Western blot testing of PTH1R antibody and Lane 1: SKOV; 2: U20S; 3: HeLa; 4: SMMC-7721 cell lysate; Observed/expected size ~66KD



Western Blotting

Image 3. Western blot testing of PTH1R antibody and Lane 1: SKOV