

Datasheet for ABIN3032156  
**anti-Parkin antibody (AA 387-417)**

## 7 Images

[Go to Product page](#)

## Overview

Quantity:	0.4 mL
Target:	Parkin (PARK2)
Binding Specificity:	AA 387-417
Reactivity:	Human, Mouse
Host:	Rabbit
Clonality:	Polyclonal
Conjugate:	This Parkin antibody is un-conjugated
Application:	Western Blotting (WB), ELISA, Immunohistochemistry (IHC), Immunofluorescence (IF), Flow Cytometry (FACS)

## Product Details

Immunogen:	A portion of amino acids 387-417 from the human protein was used as the immunogen for this Parkin antibody.
Isotype:	Ig Fraction
Purification:	Purified

## Target Details

Target:	Parkin (PARK2)
Alternative Name:	Parkin ( <a href="#">PARK2 Products</a> )
Background:	Parkin possibly plays a role in the regulation of neuron death. Limits the production of reactive oxygen species (ROS). Regulates cyclin-E during neuronal apoptosis. In collaboration with

## Target Details

CHPF isoform 2, may enhance cell viability and protect cells from oxidative stress. Independently of its ubiquitin ligase activity, protects from apoptosis by the transcriptional repression of p53/TP53. May protect neurons against alpha synuclein toxicity, proteasomal dysfunction, GPR37 accumulation, and kainate-induced excitotoxicity. May play a role in controlling neurotransmitter trafficking at the presynaptic terminal and in calcium-dependent exocytosis. May represent a tumor suppressor gene. [UniProt]

UniProt: [O60260](#)

Pathways: [Autophagy](#), [Ubiquitin Proteasome Pathway](#)

## Application Details

Application Notes: Titration of the Parkin antibody may be required due to differences in protocols and secondary/substrate sensitivity.\. Western blot: 1:1000,Immunofluorescence: 1:10-1:50,Flow Cytometry: 1:10-1:50,IHC (Paraffin): 1:50-1:100

Restrictions: For Research Use only

## Handling

Format: Liquid

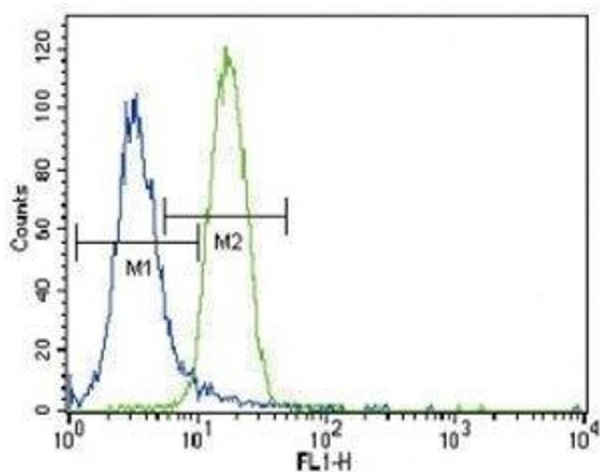
Buffer: In 1X PBS, pH 7.4, with 0.09 % sodium azide

Preservative: Sodium azide

Precaution of Use: This product contains Sodium azide: a POISONOUS AND HAZARDOUS SUBSTANCE which should be handled by trained staff only.

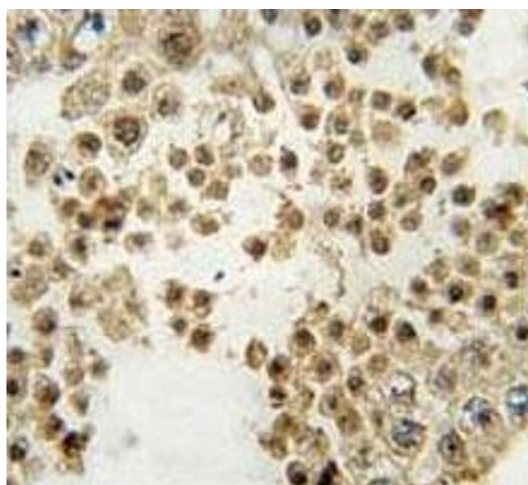
Storage: -20 °C

Storage Comment: Aliquot the Parkin antibody and store frozen at -20°C or colder. Avoid repeated freeze-thaw cycles.



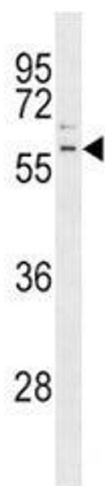
### Flow Cytometry

**Image 1.** Parkin antibody flow cytometric analysis of NCI-H460 cells (right histogram) compared to a negative control (left histogram). FITC-conjugated goat-anti-rabbit secondary Ab was used for the analysis.



### Immunohistochemistry

**Image 2.** IHC analysis of FFPE human testis tissue stained with Parkin antibody



### Western Blotting

**Image 3.** Parkin antibody western blot analysis in K562 lysate. Predicted molecular weight: 50-60 kDa.

Please check the [product details page](#) for more images. Overall 7 images are available for ABIN3032156.