



Datasheet for ABIN3032175

anti-PIN1 antibody

3 Images



[Go to Product page](#)

Overview

Quantity:	0.4 mL
Target:	PIN1
Reactivity:	Human, Mouse, Rat
Host:	Mouse
Clonality:	Monoclonal
Conjugate:	This PIN1 antibody is un-conjugated
Application:	Western Blotting (WB), ELISA, Immunohistochemistry (IHC)

Product Details

Immunogen:	Purified His-tagged protein was used to produced this monoclonal PIN1 antibody.
Clone:	855CT1-7-5
Isotype:	IgG1
Purification:	Purified

Target Details

Target:	PIN1
Alternative Name:	PIN1 (PIN1 Products)
Background:	Essential PPlase that regulates mitosis presumably by interacting with NIMA and attenuating its mitosis-promoting activity. Displays a preference for an acidic residue N-terminal to the isomerized proline bond. Catalyzes pSer/Thr-Pro cis/trans isomerizations. Down-regulates kinase activity of BTK. Can transactivate multiple oncogenes and induce centrosome

Target Details

amplification, chromosome instability and cell transformation. Required for the efficient dephosphorylation and recycling of RAF1 after mitogen activation.

UniProt: [Q13526](#)

Application Details

Application Notes: Titration of the PIN1 antibody may be required due to differences in protocols and secondary/substrate sensitivity. IHC (Paraffin): 1:25, Western blot: 1:1000

Restrictions: For Research Use only

Handling

Format: Liquid

Buffer: In 1X PBS, pH 7.4, with 0.09 % sodium azide

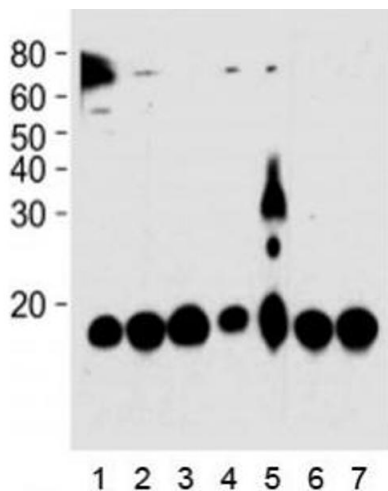
Preservative: Sodium azide

Precaution of Use: This product contains Sodium azide: a POISONOUS AND HAZARDOUS SUBSTANCE which should be handled by trained staff only.

Storage: -20 °C

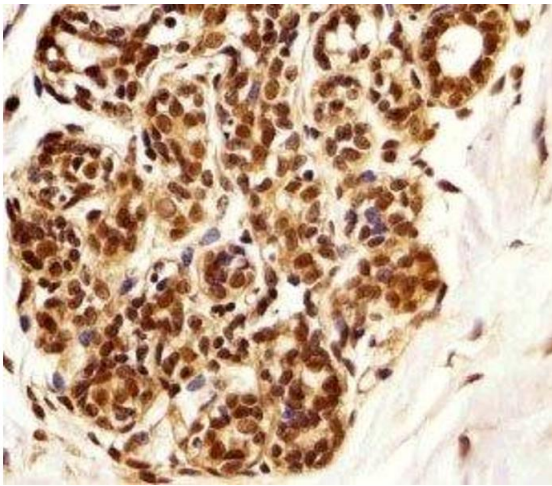
Storage Comment: Aliquot the PIN1 antibody and store frozen at -20°C or colder. Avoid repeated freeze-thaw cycles.

Images



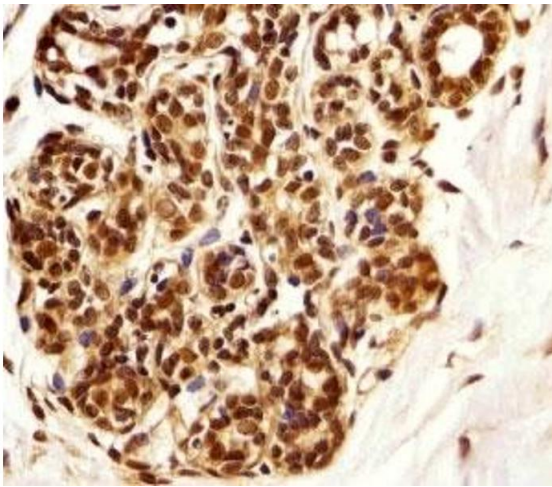
Western Blotting

Image 1. PIN1 antibody western blot analysis in 1) HeLa, 2) 293, 3) mouse NIH3T3, 4) rat PC-12, 5) COS-7 cell line, 6) mouse brain, and 7) rat brain tissue lysate. Predicted molecular weight ~18 kDa.



Immunohistochemistry

Image 2. Immunohistochemical analysis of paraffin-embedded human breast using PIN1 antibody at 1:25 dilution.



Immunohistochemistry

Image 3. Immunohistochemical analysis of paraffin-embedded human breast using PIN1 antibody at 1:25 dilution.