

Datasheet for ABIN3032178
anti-PPID antibody (AA 351-370)



[Go to Product page](#)

3 Images

Overview

Quantity:	100 µg
Target:	PPID
Binding Specificity:	AA 351-370
Reactivity:	Human, Mouse, Rat
Host:	Rabbit
Clonality:	Polyclonal
Conjugate:	This PPID antibody is un-conjugated
Application:	Western Blotting (WB), Immunohistochemistry (Paraffin-embedded Sections) (IHC (p))

Product Details

Immunogen:	Amino acids 351-370 (KQKIKAQKDKEKAVYAKMFA-human) were used as the immunogen for this PPID antibody.
Isotype:	IgG
Purification:	Antigen affinity

Target Details

Target:	PPID
Alternative Name:	PPID (PPID Products)
Background:	Cyclophilin 40, or Peptidylprolyl isomerase D, also known as PPID, is an enzyme which in humans is encoded by the PPID gene. The protein encoded by this gene is a member of the peptidyl-prolyl cis-trans isomerase(PPIase) family. The gene contains 10 exons and spans 14.2

Target Details

kb of genomic DNA. By fluorescence in situ hybridization, the PPID gene is mapped to chromosome 4q31.3. PPlases catalyze the cis-trans isomerization of proline imidic peptide bonds in oligopeptides and accelerate the folding of proteins. This protein has been shown to possess PPlase activity and, similar to other family members, can bind to the immunosuppressant ciclosporin.

UniProt:	Q08752
Pathways:	Nuclear Hormone Receptor Binding

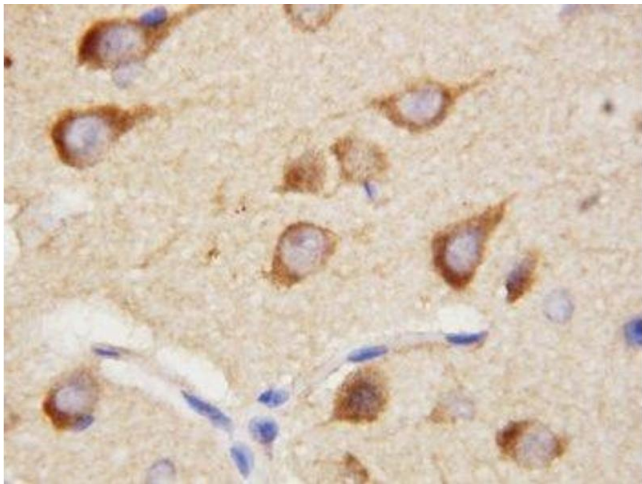
Application Details

Application Notes:	The stated application concentrations are suggested starting amounts. Titration of the PPID antibody may be required due to differences in protocols and secondary/substrate sensitivity.\. Western blot: 0.5-1 µg/mL,IHC (Paraffin): 0.5-1 µg/mL
Restrictions:	For Research Use only

Handling

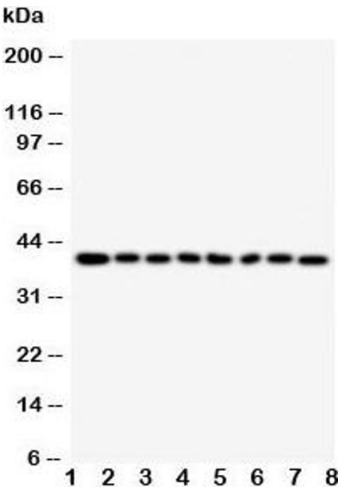
Buffer:	0.5 mg/mL if reconstituted with 0.2 mL sterile DI water
Storage:	-20 °C
Storage Comment:	After reconstitution, the PPID antibody can be stored for up to one month at 4°C. For long-term, aliquot and store at -20°C. Avoid repeated freezing and thawing.

Images



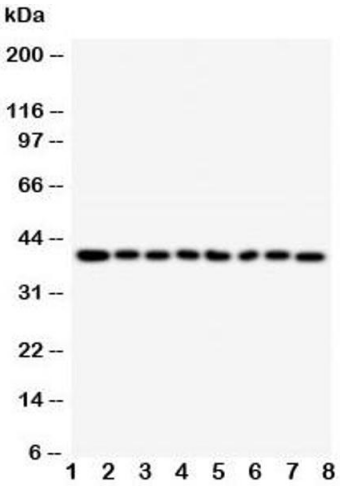
Immunohistochemistry

Image 1. IHC-P: PPID antibody testing of rat brain tissue



Western Blotting

Image 2. Western blot testing of PPID antibody and Lane 1: rat brain; 2: rat pancreas; 3: rat liver; 4: Jurkat; 5: Raji; 6: CEM; 7: HL-60; 8: HT1080 cell lysate



Western Blotting

Image 3. Western blot testing of PPID antibody and Lane 1: rat brain