

Datasheet for ABIN3032197
anti-PHF1 antibody (N-Term)



[Go to Product page](#)

2 Images

Overview

Quantity:	0.4 mL
Target:	PHF1
Binding Specificity:	N-Term
Reactivity:	Mouse
Host:	Rabbit
Clonality:	Polyclonal
Conjugate:	This PHF1 antibody is un-conjugated
Application:	Western Blotting (WB), ELISA

Product Details

Immunogen:	This PHF1 antibody was produced from a rabbit immunized with a KLH conjugated synthetic peptide between 164-197 amino acids from the N-terminal region of human PHF1.
Isotype:	Ig Fraction
Purification:	Antigen affinity purified

Target Details

Target:	PHF1
Alternative Name:	PHF1 (PHF1 Products)
Background:	Polycomb group (PcG) that specifically binds histone H3 trimethylated at 'Lys-36' (H3K36me3) and recruits the PRC2 complex. Involved in DNA damage response and is recruited at double-strand breaks (DSBs). Acts by binding to H3K36me3, a mark for transcriptional activation, and

Target Details

recruiting the PRC2 complex: it is however unclear whether recruitment of the PRC2 complex to H3K36me3 leads to enhance or inhibit H3K27me3 methylation mediated by the PRC2 complex. According to some reports, PRC2 recruitment by PHF1 promotes H3K27me3 and subsequent gene silencing by inducing spreading of PRC2 and H3K27me3 into H3K36me3 loci (PubMed:18285464 and PubMed:23273982). According to another report, PHF1 recruits the PRC2 complex at double-strand breaks (DSBs) and inhibits the activity of PRC2 (PubMed:23142980). Regulates p53/TP53 stability and prolongs its turnover: may act by specifically binding to a methylated form of p53/TP53.

UniProt: [O43189](#)

Application Details

Application Notes: Titration of the PHF1 antibody may be required due to differences in protocols and secondary/substrate sensitivity.\. Western blot: 1:1000

Restrictions: For Research Use only

Handling

Format: Liquid

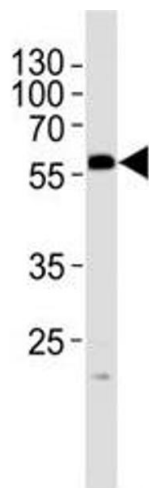
Buffer: In 1X PBS, pH 7.4, with 0.09 % sodium azide

Preservative: Sodium azide

Precaution of Use: This product contains Sodium azide: a POISONOUS AND HAZARDOUS SUBSTANCE which should be handled by trained staff only.

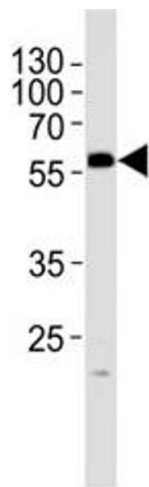
Storage: -20 °C

Storage Comment: Aliquot the PHF1 antibody and store frozen at -20°C or colder. Avoid repeated freeze-thaw cycles.



Western Blotting

Image 1. Western blot analysis of lysate from mouse testis tissue lysate using PHF1 antibody at 1:1000.



Western Blotting

Image 2. Western blot analysis of lysate from mouse testis tissue lysate using PHF1 antibody at 1:1000.