

Datasheet for ABIN3032200
anti-PTEN antibody (AA 306-335)



[Go to Product page](#)

5 Images

Overview

Quantity:	0.4 mL
Target:	PTEN
Binding Specificity:	AA 306-335
Reactivity:	Human
Host:	Rabbit
Clonality:	Polyclonal
Conjugate:	This PTEN antibody is un-conjugated
Application:	Western Blotting (WB), ELISA, Immunohistochemistry (IHC), Immunofluorescence (IF)

Product Details

Immunogen:	A portion of amino acids 306-335 from the human protein was used as the immunogen for this PTEN antibody.
Isotype:	Ig Fraction
Cross-Reactivity (Details):	Expected species reactivity: Mouse, Xenopus
Purification:	Antigen affinity purified

Target Details

Target:	PTEN
Alternative Name:	PTEN (PTEN Products)
Background:	This gene was identified as a tumor suppressor that is mutated in a large number of cancers at

Target Details

high frequency. The protein encoded this gene is a phosphatidylinositol-3,4,5-trisphosphate 3-phosphatase. It contains a tensin like domain as well as a catalytic domain similar to that of the dual specificity protein tyrosine phosphatases. Unlike most of the protein tyrosine phosphatases, this protein preferentially dephosphorylates phosphoinositide substrates. It negatively regulates intracellular levels of phosphatidylinositol-3,4,5-trisphosphate in cells and functions as a tumor suppressor by negatively regulating AKT/PKB signaling pathway.

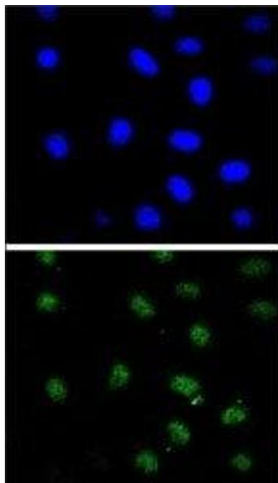
UniProt:	P60484
Pathways:	TCR Signaling , Fc-epsilon Receptor Signaling Pathway , EGFR Signaling Pathway , Inositol Metabolic Process , Synaptic Membrane , Regulation of Cell Size , Autophagy , Platelet-derived growth Factor Receptor Signaling , Signaling of Hepatocyte Growth Factor Receptor , BCR Signaling

Application Details

Application Notes:	Titration of the PTEN antibody may be required due to differences in protocols and secondary/substrate sensitivity.\. Western blot: 1:1000,Immunofluorescence: 1:10-1:50,IHC (Paraffin): 1:10-1:50
Restrictions:	For Research Use only

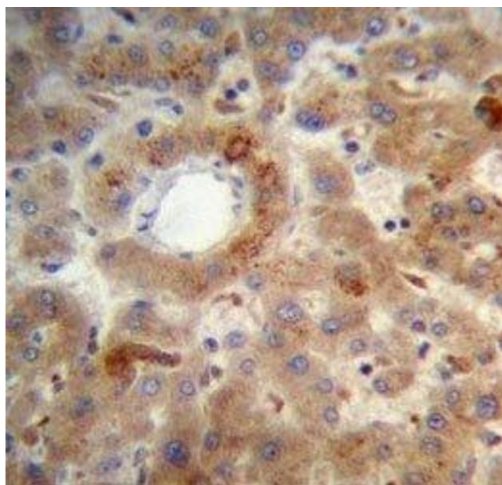
Handling

Format:	Liquid
Buffer:	In 1X PBS pH 7.4 with 0.09 % sodium azide
Preservative:	Sodium azide
Precaution of Use:	This product contains Sodium azide: a POISONOUS AND HAZARDOUS SUBSTANCE which should be handled by trained staff only.
Storage:	-20 °C
Storage Comment:	Aliquot the PTEN antibody and store frozen at -20°C or colder. Avoid repeated freeze-thaw cycles.



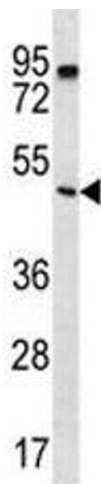
Immunofluorescence

Image 1. Confocal immunofluorescent analysis of PTEN antibody with 293 cells followed by Alexa Fluor 488-conjugated goat anti-rabbit IgG (green). DAPI was used as a nuclear counterstain (blue).



Immunohistochemistry

Image 2. PTEN antibody immunohistochemistry analysis in formalin fixed and paraffin embedded human liver tissue.



Western Blotting

Image 3. PTEN antibody western blot analysis in K562 lysate.

Please check the [product details page](#) for more images. Overall 5 images are available for ABIN3032200.