

Datasheet for ABIN3032205
anti-PTEN antibody (pThr382)



[Go to Product page](#)

2 Images

Overview

Quantity:	0.4 mL
Target:	PTEN
Binding Specificity:	pThr382
Reactivity:	Human
Host:	Rabbit
Clonality:	Polyclonal
Conjugate:	This PTEN antibody is un-conjugated
Application:	Dot Blot (DB), ELISA

Product Details

Immunogen:	This phospho-PTEN antibody was produced from rabbits immunized with a KLH conjugated synthetic phosphopeptide corresponding to amino acid residues surrounding pT382 of human PTEN.
Isotype:	Ig Fraction
Cross-Reactivity (Details):	Expected species reactivity: Mouse, Xenopus
Purification:	Antigen affinity purified

Target Details

Target:	PTEN
Alternative Name:	PTEN (PTEN Products)

Target Details

Background: This gene was identified as a tumor suppressor that is mutated in a large number of cancers at high frequency. The protein encoded this gene is a phosphatidylinositol-3,4,5-trisphosphate 3-phosphatase. It contains a tensin like domain as well as a catalytic domain similar to that of the dual specificity protein tyrosine phosphatases. Unlike most of the protein tyrosine phosphatases, this protein preferentially dephosphorylates phosphoinositide substrates. It negatively regulates intracellular levels of phosphatidylinositol-3,4,5-trisphosphate in cells and functions as a tumor suppressor by negatively regulating AKT/PKB signaling pathway.

UniProt: [P60484](#)

Pathways: [TCR Signaling](#), [Fc-epsilon Receptor Signaling Pathway](#), [EGFR Signaling Pathway](#), [Inositol Metabolic Process](#), [Synaptic Membrane](#), [Regulation of Cell Size](#), [Autophagy](#), [Platelet-derived growth Factor Receptor Signaling](#), [Signaling of Hepatocyte Growth Factor Receptor](#), [BCR Signaling](#)

Application Details

Application Notes: Titration of the phospho-PTEN antibody may be required due to differences in protocols and secondary/substrate sensitivity.\. Dot blot: 1:500

Restrictions: For Research Use only

Handling

Format: Liquid

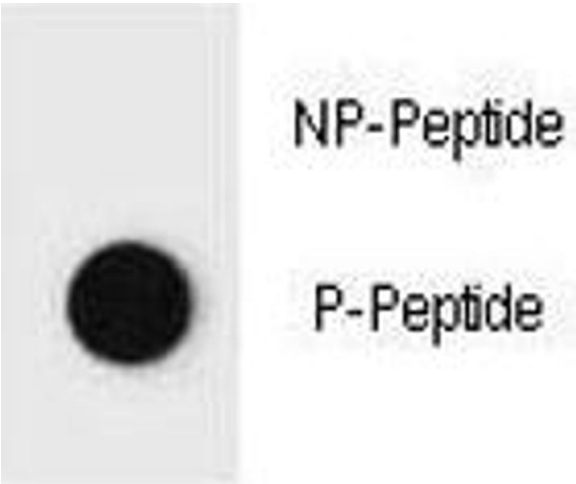
Buffer: In 1X PBS pH 7.4 with 0.09 % sodium azide

Preservative: Sodium azide

Precaution of Use: This product contains Sodium azide: a POISONOUS AND HAZARDOUS SUBSTANCE which should be handled by trained staff only.

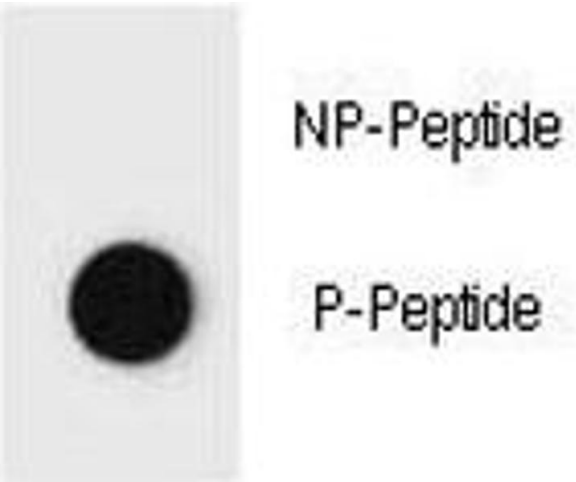
Storage: -20 °C

Storage Comment: Aliquot the phospho-PTEN antibody and store frozen at -20°C or colder. Avoid repeated freeze-thaw cycles.



Dot Blot

Image 1. Dot blot analysis of phospho-PTEN antibody. 50ng of phos-peptide or nonphos-peptide per dot were spotted.



Dot Blot

Image 2. Dot blot analysis of phospho-PTEN antibody. 50ng of phos-peptide or nonphos-peptide per dot were spotted.