

Datasheet for ABIN3032216
anti-PTEN antibody (AA 371-403)

3 Images

[Go to Product page](#)

Overview

Quantity:	0.4 mL
Target:	PTEN
Binding Specificity:	AA 371-403
Reactivity:	Human
Host:	Rabbit
Clonality:	Polyclonal
Conjugate:	This PTEN antibody is un-conjugated
Application:	Western Blotting (WB), ELISA, Immunofluorescence (IF)

Product Details

Immunogen:	A portion of amino acids 371-403 from the human protein was used as the immunogen for this PTEN antibody.
Isotype:	Ig Fraction
Purification:	Purified

Target Details

Target:	PTEN
Alternative Name:	PTEN (PTEN Products)
Background:	Phosphatase and tensin homolog (PTEN) is a tumor suppressor. It acts as a dual-specificity protein phosphatase, dephosphorylating tyrosine-, serine- and threonine-phosphorylated proteins. [UniProt]

Target Details

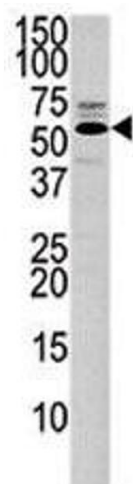
UniProt:	P60484
Pathways:	TCR Signaling , Fc-epsilon Receptor Signaling Pathway , EGFR Signaling Pathway , Inositol Metabolic Process , Synaptic Membrane , Regulation of Cell Size , Autophagy , Platelet-derived growth Factor Receptor Signaling , Signaling of Hepatocyte Growth Factor Receptor , BCR Signaling

Application Details

Application Notes:	The stated application concentrations are suggested starting amounts. Titration of the PTEN antibody may be required due to differences in protocols and secondary/substrate sensitivity.\. Western blot: 1:1000,Immunofluorescence: 1:10-1:50
Restrictions:	For Research Use only

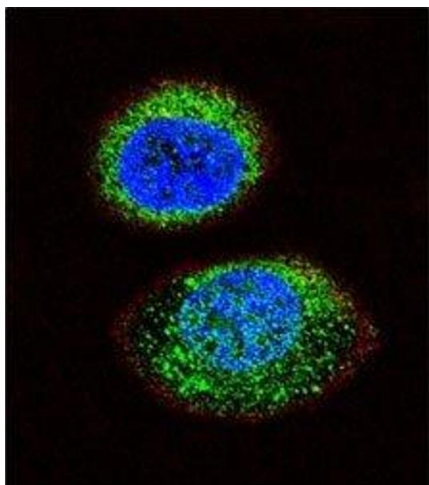
Handling

Format:	Liquid
Buffer:	In 1X PBS pH 7.4 with 0.09 % sodium azide
Preservative:	Sodium azide
Precaution of Use:	This product contains Sodium azide: a POISONOUS AND HAZARDOUS SUBSTANCE which should be handled by trained staff only.
Storage:	-20 °C
Storage Comment:	Store at 4°C for up to one month. For long-term, aliquot the PTEN antibody and store frozen at -20°C or colder. Avoid repeated freeze-thaw cycles.



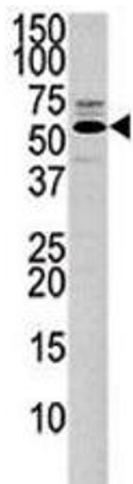
Western Blotting

Image 1. Western blot analysis of PTEN antibody and 293 lysate.



Immunofluorescence

Image 2. Confocal immunofluorescent analysis of PTEN antibody with MCF-7 cells followed by Alexa Fluor 488-conjugated goat anti-rabbit IgG (green). Actin filaments have been labeled with Alexa Fluor 555 Phalloidin (red). DAPI was used as a nuclear counterstain (bl



Western Blotting

Image 3. Western blot analysis of PTEN antibody and 293 lysate.